



2023-2024 / Complimentary

visitnect

Northeastern Connecticut's Premier Visitor Guide

Serving the towns of Pomfret, Woodstock, Putnam,
Thompson, Eastford, Brooklyn & Killingly



Brooklyn Fair, photo by TJ Ladzinski - Ladman Studios



Dining, Shopping, Arts, Accommodations, Scenic Beauty, History, Agriculture, Business



HERE TO MAKE YOUR EXPERIENCE

— *simply memorable* —

BED & BREAKFAST • FINE DINING RESTAURANT

MANICURED GARDENS • BANQUET CENTER

29 PLAINE HILL RD. WOODSTOCK, CT 06281

860.974.3456 • info@mansionatbaldhill.com

mansionatbaldhill.com





Award-winning care. Minutes from home.

DAY KIMBALL HOSPITAL

320 Pomfret Street | Putnam, CT
(860) 928-6541

Emergency & Inpatient Care, Birthing Center, Cancer Center, Cardiopulmonary Rehab, Laboratory and Diagnostic Imaging, Sleep Disorder Center, Surgical & Ambulatory Care, Urology Services, Wound Care Clinic, and Associated Specialty Physician Practices
Behavioral Health: (860) 963-6385

DAY KIMBALL HEALTHCARE AT HOME

HomeCare, HomeMakers and
Hospice & Palliative Care of Northeastern CT
32 South Main Street | Putnam, CT
(860) 928-0422 | daykimball.org/athome

DAY KIMBALL MEDICAL GROUP

Family Medicine, Internal Medicine, Pediatrics,
Cardiology, Dermatology, Endocrinology, OB/GYN,
General Surgery, Maternal Fetal Medicine, Pulmonary
Medicine, Urology

Locations across Northeast Connecticut
1 (844) DKMG DOC | daykimball.org/booknow

DAY KIMBALL HEALTHCARE CENTERS

55 Green Hollow Road | Danielson, CT
Blood Draw & Laboratory: (860) 779-0066
Dermatology: (860) 779-1865
Diagnostic Imaging: (860) 963-6320
Physical Medicine & Rehab: (860) 779-0252

612 Hartford Pike | Dayville, CT
DKMG Internal Medicine: (860) 779-0867

12 Lathrop Road | Plainfield, CT

Anticoagulation Clinic: (860) 457-9168
Blood Draw & Laboratory: (860) 457-9166
Diagnostic Imaging: (860) 963-6320
DKMG Endocrinology: (860) 457-9133
DKMG Internal Medicine: (860) 457-9191
DKMG OB/GYN: (860) 457-9200
DKMG Pediatrics: (860) 457-9191

12 South Main Street | Putnam, CT

Anticoagulation Clinic: (860) 457-9168
Blood Draw: (860) 928-8370
Physical Medicine & Rehab: (860) 928-8360

DKH DAY KIMBALL HEALTH
daykimball.org



visitnect

Northeastern Connecticut's Premier Visitor Guide



Dubbed The Last Green Valley because that's how we look from the air at night, northeast Connecticut has so much on the ground for visitors to share in and enjoy. Rolling hills and fields, stonewalls, historic mills and villages tell of an agricultural and industrial past to explore by car, bike or on foot. Today many farmers welcome visitors and take their produce to the local farmers' markets. Nature preserves, riverbanks, and abandoned rail lines have become hiking trails. Factories

are transformed into housing. Ingenious artisans, restaurateurs, and antiques dealers with creative business ideas take over Main Street storefronts and other sites that bring energy to our historic settings. Also known as the Quiet Corner or the Tri-State area, there are no major cities or a firm boundary, but virtual visits to our communities can be made via the Internet and an even better experience in person.

Browse these local websites for more information!

Brooklyn www.brooklynbusinessassociation.org

Eastford <https://www.ctvisit.com/listings/town-eastford>

Killingly/Danielson www.killinglyba.org

Pomfret www.visitpomfret.com

Putnam www.discoverputnam.com

Thompson www.thompsonct.org

Woodstock www.explorewoodstock.com

A regional resource for discovering northeast CT is through the **The Last Green Valley, Inc. (TLGV)** that serves 35 towns astride the Connecticut-Massachusetts border. The organization connects residents and visitors with the diverse natural, historical, and cultural resources found here. Robust calendars of staff and volunteer-led outdoor events extend from the Spring Equinox to the Summer Solstice early in the year to Walktober, an "outdoor season," with events planned from mid-September into early November. Over the year are a couple of hundred hikes, paddles, and tours across the region. TLGV is supported in part by members who believe in its mission. The Last Green Valley National Heritage Corridor. www.thelastgreenvalley.org



Main Street & Country Towns...

Main Streets in Putnam and Killingly's borough of Danielson, once prosperous factory towns, have a stock of historic brick and stone storefronts and multi-use river-front recreation areas. Both have convenient, free public parking and a welcoming, walkable scale. Brooklyn, Eastford, Pomfret, Thompson, and Woodstock proudly retain their town commons and a slower pace.

Downtown Putnam was once hailed as the "Antiques Capital of New England," and some antiques and collectibles businesses remain there and in the area. Putnam has evolved into a center for arts and culture and a popular dining and entertainment destination. Putnam offers an eclectic mix of restaurants, galleries, and

boutique stores anchored by the Antiques Marketplace at the corner of Main and Front Streets. The Bradley Playhouse offers annual seasons of drama, musical theater, and special events. Street festivals are a draw throughout the seasons (<https://www.discoverputnam.com/events>); the riverside Rotary Park has a bandstand for outdoor concerts, and occasional River Fires. A full range of places to eat is a newer Putnam tradition. Looking for breakfast, lunch, or dinner, a drink, a late-night snack, or ice cream? Other categories to choose from: ambience, cuisine, price point, special occasion, family-friendly, Thai, Chinese, sushi, pizza, outdoor dining - all are options.

Danielson offers its own distinctive mix of shopping and dining on a smaller scale on Main Street. And don't miss what Brooklyn, Pomfret, and Thompson have to offer!



Rotary Park, Putnam, CT

TABLE OF CONTENTS:

6-7	Dining	18-19	Annual Events
8	Drink & Be Merry	20-21	The Great Outdoors
10-13	Shopping	22	Meet the Farmers
14	Weddings	26-29	Private & Independent Schools
16	Accommodations		

It is our pleasure to introduce the 2023-2024 *Visitnct* Visitor Guide. Our goal is to promote northeastern Connecticut as a 'destination location' and to encourage residents to shop locally. This visitor guide was inspired and generously supported by the many creative businesses who share our vision. We would like to thank all of the advertisers and the individuals who have made this publication possible. There are hundreds of unique businesses throughout the area— too many to list. Therefore, we have compiled the copy and listings that include businesses who participated. *The next issue will be released in Fall 2024!*

45 minutes from Providence and Hartford • 1 hour from Boston • 3 hours from New York City

www.visitnortheasternct.com

This publication is
Published & Distributed by:

GDP

GLOBAL DESIGN & PUBLISHING LLC

860-963-0414 • kelly@gdpublishing.com
www.visitnortheasternct.com

Design: Jim Tourtellotte

Marketing & Sales: Kelly Tourtellotte

Writer/Editor: Caroline Sloat & Kelly Tourtellotte

All design and text is provided by Global Design & Publishing, LLC. Text and images have been carefully compiled for this publication. However, we do not guarantee the accuracy of the content.

Photos provided by Global Design & Publishing, LLC and local businesses.

Center Photo courtesy of TJ Ladzinski - Ladman Studios

Copyright ©2023, Global Design & Publishing, LLC. Any reproduction without our written permission is prohibited.



Dining

Even here in the country, you can find worldly cuisines such as Thai food and sushi, but our favorite local restaurants use farm-fresh local produce and other homegrown food products whenever possible. Here are some ideas to get your stomach rumbling....

FINE & CASUAL DINING (plus Sunday brunch)

Brooklyn

Hanks

Homestyle cooking. Lunch and dinner daily.
www.hanksrestaurant.com

Grill 445

Soups, salads, wraps, burgers, pasta, seafood, specials & more.
www.grill445.com

Sweet Peas Fine Foods and Farm Market

Specialty foods and chef-prepared meals, baked goods and groceries. Seasonal fresh vegetables. Takeout and catering to go.
www.sweetpeasfinefoods.com

Dayville

Golden Greek

Family restaurant Lunch and dinner daily, bar and lounge with flat screen TVs.
 Find them on Facebook



Pomfret

Grill 37

Steakhouse, bar, and banquets. Local seafood. Sunday brunch menu. Wednesdays through Sundays.
www.grill37.com

Vanilla Bean Café

Breakfast, lunch & dinner, outdoor patio. House-made soups and chili, salads, sandwiches, burgers and daily specials with fresh local ingredients. Live music events.
www.thevanillabeancafe.com

Putnam

85 Main

Upscale American Fusion Cuisine offering lunch & dinner plus sushi, raw bar, wine cellar & late-night bar menu. Locally sourced daily specials. Open seven days.
www.85main.com



Black Dog Bar and Grille

Sandwiches, salads, steaks, chicken, and seafood. Pub menu with grill-fired pizzas, breads, and sandwiches. Happy hour with food discounts. www.blackdogbarandgrille.com

Courthouse Bar and Grill

In Putnam's 1889 Courthouse, so that's the theme: The Docket ranges from Opening Statements through Closing Arguments, a full menu of sandwiches and plated meals. Daily happy hour with tacos. www.courthousebarandgrille.com

Elizabeth's Farmhouse

Lunch, dinner, drinks in an intimate setting. Seasonal ingredients a feature. Wednesday through Saturday. www.elizabethsfarmhouse.com

Jessica Tuesdays

A boutique restaurant at Union Square. Indoor and patio dining. Mondays through Saturdays. www.jessicatuesdays.com

Renee's Bistro and Catering

Dine in at lunch or an early dinner. Grab & Go, plus a full menu to plan a catered event. www.reneesbistroandcatering.com

Saw Dust Coffee House

Coffees, breakfast and lunch with freshly made baked goods and desserts. Full liquor license. Live acoustic music on Friday and Saturday nights. www.sawdustcoffeehouse.com



The Hare & The Hound

Irish-themed menu serving traditional dishes with a contemporary twist. Patio dining in Union Square. www.thehareandthehound.com

Thompson

Anya

Dining with a French flair in a contemporary setting. Wine, cocktail, and food menus evolve with the seasons. Weds through Sunday. www.anyadining.com

Woodstock

Mansion at Bald Hill

Dine in an elegant Old World mansion. Specialty salads and entrees feature seasonal local ingredients. Bed and breakfast; banquet center. Tuesday through Sunday. www.mansionatbaldhill.com

Multple Locations

The Baker's Dozen

Coffee shop with donuts, bagels, sandwiches. Eat in or drive through. In Brooklyn, East Putnam, Pomfret, Putnam, plus Central Village, Gales Ferry, Norwich, and Plainfield. www.bakersdozenct.com

More eating like a local (plus Pizza & Ice Cream)

Brooklyn

Jonny's Pizza • Brooklyn Pizza • Classic Pizza & Family Restaurant • The Ice Box

Danielson/Killingly

Heirloom Food Company • Jade Garden • Sugarz Bakery • Pizza Pizzazz • New York Pizza Co.

Pomfret

Pizza 101 • Airline Grille (seasonal) • We-Li-Kit

Dayville

Zip's Diner • Yamato Steak House of Japan • Mexican Grill • Railside Tavern • 4 G's Restaurant and Pizza • Ra-Ra's Ice Cream Shop

Putnam

Bill's Bread & Breakfast • Chubby Dog Coffee Co. • Henry's • Jade Garden • Mainly Seafood • Marika's Place • Nikki's Dog House • Thai Chili Pho • Thai Place • The Painted Baker • Uptown Sandwiches • The Broken Crust • The Quarterback Club • Slice of Heaven • Leona's Baking Co. • Deary Brothers • Main Street Gelato • Riverview Ice Cream

Thompson

Frank's Milltown Grill • LB's Family Restaurant • Raceway Restaurant • Mack's Catering • Riverside Pizza • Thompson House of Pizza • A La Mode Market • Bogey's

Woodstock

Soleil Bakery • Thai Basil • Woodstock Trading Post Country Stand • Farm to Table • Woodstock Creamery • Buck's Soft Serve



Drink & Be Merry

Photo courtesy of Taylor Brooke Winery

Bear Hands Brewing Co., Putnam

Brewing on site, tap room, pub fare, dog-friendly patio
Growlers to-go.

bearhandsbrewing.com

Black Pond Brews, Dayville

On-site brewery with tasting room—full pours and flights.
German and Italian-inspired food.

blackpondbrews.com

Sharpe Hill Vineyard, Pomfret

Tasting room open weekends.
Award-winning wines can be
purchased at locations nearby
and farther afield. sharpehill.com

Taylor Brooke Winery & Brewery, Woodstock

Family-owned on-site winery
(since 2004) and brewery
(since 2019) on 40 scenic
acres; weekend food trucks.
taylorbrookewinery.com and
taylorbrookebrewery.com

The Boroughs Brewing Company, Danielson

Taproom and outdoor patio,
also CT-made ciders and wines.
Canned cocktails and spirits.
Thursday through Monday.
theboroughsbrewing.com

The Crossings, Putnam

Bar and restaurant serving pub-style food at lunch and
dinner in Putnam's restored historic train station. House
brews on tap, guest taps feature New England craft
breweries. crossingsbrewpub.com

The Stomping Ground, Putnam

Live music and art venue with extensive menu,
craft beers on tap.
<https://the-stomping-ground.com/>

Treehouse Orchard and Farm Fermentory, Woodstock

Reservations made by advance
orders of cider and draft beers
on day of visit at this location
only. Thursday through Sunday.
Also in MA: Charlton, Deerfield,
Sandwich, Tewksbury. <https://treehousebrew.com/visiting-woodstock-ct>

Watercure Farm Distillery, Pomfret Center

Spirits distilled on site from local
crops. Tasting room featuring
flights and cocktails with our own
whisky, bourbon, brandies, vodkas,
and apple-spice flavored rum.
Bottle sales and light food.
<https://watercurefarm.com>





AWARD WINNING:

Art Galleries • Antiques • Boutiques • Cafes • Dining • Live Music • Theatre

ACCLAIMED SEASONAL EVENTS:

• River Fires • Main St. Car Cruise • Zombie Fashion Show • Pumpkin Festival
 • Holiday Dazzle Light Parade • Fire and Ice Festival • O' Putnam Sk
 • Fireworks And More!

TOP 15 BEST SMALL TOWNS TO VISIT - Boston Magazine



A destination built on creativity with intention to inspire.

Nestled on the banks of the Quinebaug River, The town of Putnam boasts an assortment of award winning restaurants, bars, cafes, antiques, art galleries, collectible toy and comic book stores, boutiques and The Bradley Playhouse Theater. In addition, Putnam offers a River Trail, a Dog Park, and a large assortment of sculptures and murals that will leave you with a sense of "Character Around Every Corner" and keep you coming back for more.

For more information visit: www.discoverputnam.com



ATTORNEY MICHELE ANN PALULIS, LLC



**Friendly compassionate
 legal services for you and
 your loved ones.**

158 Main Street, Suite 2,
 Putnam CT 06260
 (860) 928-9928
michele@attorneypalulis.com



Block 134 Arts & Wellness

Local Shops

“Good things come to those who shop local.” In this spirit, the Quiet Corner’s shopkeepers and purveyors of food and services creatively and passionately do their work by paying serious attention to offering distinctive wares and amenities. Just as there are food options galore, shopping is right up there! Carefully curated collections of artisan-made and ‘one-of-a-kinds’ as gifts or for personal use beckon, and great fun awaits the explorer. In Putnam, most shops are clustered for walking, as are Danielson’s; in Woodstock, the shops are dispersed over a short distance requiring a car, as a shops in other towns.

Antiques Marketplace,

109 Main Street, Putnam
(Find them on Facebook)

350 dealers of antiques and vintage, glass, silver, jewelry and vintage clothing to furniture, clocks, art, toys & more.

Arts & Framing

136 Main Street, Putnam
(Find them on Facebook)

Quality custom framing and restoration plus art gallery featuring local artists.

August & March Home

130 Main Street, Putnam
(www.augustmarchhome.com)

A specialty shop offering a wide variety of traditional, vintage, and modern home goods & home decor.

BLOCK 134 Arts & Wellness Co-Op,

134 Main Street, Putnam
(Find them on Facebook)

Integrative health and wellness resources in partnership with yoga instructors and private practitioners offering art

therapy/mental health counseling, massage therapy, and nutrition/health coaching services. Silver Circle Art Gallery.

Black Walnut Farm Shops

218 Rt 169, Woodstock
(Find them on Facebook)

Distinctive home décor and accessories displayed in three shop spaces; gifts for everyone on any occasion; featuring local musicians, authors, and artisans.



Christmas Barn

835 Route 169, Woodstock

The big red barn is filled with Christmas and rustic country décor. Open August through December.

Danielson Surplus

151 Main Street, Danielson

(Find them on Facebook) Work and casual clothing and footwear, sports equipment. Family outfitters.





Pop-Up Putnam



Frankly Toys and Antiques

199 Providence Street, Putnam
(Find them on Facebook)

Vintage toys, die-cast cars, collectables, country accents, home décor. Thursday through Sunday.

Garden Gate Florist & Gift Shop

30 Putnam Road, Pomfret

(www.gardengatefloristct.com) fresh flowers and plants plus gifts for the home/garden, local crafts & art.

Harvest Moon Health Foods

554 Liberty Hwy., Suite 4, Putnam
(www.harvestmoonhealthfoods.net)

Healthy foods, supplements, and beauty products. Homeopathic remedies and advice.

Heart & Home

65 Main Street, Danielson
(www.heartandhomect.com)

Stroll through rooms with over 6,000 square feet of space to browse home furnishings, quilting fabrics and classes, and gifts, including Yankee Candle, Byers Choice, Vera Bradley, Troll Beads, and Ty toys.

Jeremiah's Antiques & Collectables

26 Front Street, Putnam

(Find them on Facebook) More than 70 dealers with an eclectic mix of antique and old, rare and unusual.

Little Falls Nutrition

6 Pomfret Street, Putnam

(<https://littlefallsnutrition.com>)

Protein shakes, energy drinks, hot and iced teas, immunity boosts, fruit smoothies, snacks; nutrition club.

Little Lucy Snack Shop

112 Main Street, Putnam

(<https://littlelucysnackshop.com>)

Healthy snacks sourced from socially and environmentally responsible small producers. Sweet, savory, and spicy, vegan, and allergy friendly snacks. Tuesday through Saturday.

TOP LOCAL

MS
Boutique

**A Fun Boutique in
Downtown Putnam**

Clothing ~ Jewelry ~ Gifts
Featuring Fair Trade and Made in America

**75 Main Street, Suite #3
Putnam, Connecticut • Tel: 860-315-9126**



Logee's Greenhouse

141 North Street, Danielson
(www.logees.com)

Tour the historic greenhouses to gaze on fruiting, rare, and tropical plants growing year-round. Begonias, orchids, succulents...fragrant or rare, so many choices and all you need to grow them.

M's Boutique

75 Main Street, Suite 3, Putnam
(www.msboutique.net)

Stylish fair trade and made in America apparel, jewelry, and gifts. Thursday through Sunday.

Montgomery Ward Building

112 Main Street, Putnam
Discover the shops & businesses found on all levels of this historic store. Plus live music & events.

Pourings & Passages

103 Main Street, Danielson
(www.pouringsandpassages.com)

Used book store and coffee house. Well organized and large selection of quality used books sold to benefit St. James School. DVDs, CDs, vinyl, religious items, arts and crafts with a book and reading theme, and gifts. Wednesdays through Saturday.

Rusty Relic

599 Rte 169, Woodstock (Find them on Facebook)
Antiques and primitives.

Sawmill Pottery

112 Main Street, #14, Putnam
(www.sawmillpottery.com)

Art gallery showcasing and selling select work by studio potters and other local artisans making jewelry, sculpture and more. A working studio offering classes, workshops, and studio time for all ages.

Scranton's Shops

300 Route 169, South Woodstock
(<https://scrantonsshops.com>)

A multi-dealer shop with antiques, crafts, and gifts in a historic former blacksmith shop.

Silver Circle Art Gallery

Upstairs in Block 134 Main Street, Putnam
(Find them on Facebook)

Fosters art appreciation and education with curated exhibits, demonstrations, gallery talks, events, and art classes for all ages.

Skeeters Toy Box

112 Main Street #13, Putnam
(www.skeeterstoybox.com)

Toys to inspire children's creative, unstructured, open-ended play, using their imaginations not the latest licensed characters.

Symphony Flower Farm
 306 Rte 169, Woodstock
 (<https://symphonyflowerfarm.org>)

Shop a nonprofit that provides training in the field of horticulture for people with disabilities. Flowers, cards, and gifts. Weekdays

The Arc Emporium
 22 CT-171, Woodstock
 (www.thearcct.org/emporium)
 Finds await at this charity thrift shop. New and gently used clothing, jewelry, accessories, furniture, and household items. Weekdays.

Tunk City Revival
 100 Main Street, Danielson
 (Find them on Facebook)
 Artisan marketplace specializing in locally produced handmade and upcycled wares, great for gifts. Classes, paint nights, and private parties.



Woodstock Country Shoppe

Twigs & Pearls
 136 Main Street, Putnam-in-the-Arts & Framing Shop (find them on Facebook) An artsy boutique with handmade jewelry and gifts, such as fun socks, soaps, greeting cards.

Wonderland Comics
 160 Main Street, Putnam
 (www.wonderlandcomics.com)
 Eastern CT's largest comics and collectibles store.

Woolworks Yarn Shoppe
 154 Main Street, Putnam (Find them on Facebook) Yarns, knitting, and needlework patterns and supplies. Classes and individualized instruction.

Woodstock Country Shoppe
 47 CT-171, Woodstock
 (www.woodstockcountryshoppe.com)
 Country primitives and furniture, candles, tinware, textiles and paints.



POMFRET,
 New England
 to the roots...

SCENIC • HISTORIC • GRACIOUS • DELICIOUS



www.VisitPomfret.com

Weddings & Special Events



Mansion at Bald Hill

Gorgeous country settings lure destination weddings to the Quiet Corner. Three international airports and major highways solve the problem of “getting there.” Once here, choose from unforgettable locations, with backdrops of historic architecture, lush gardens and rural vistas, and yes, contemporary and new. Each offers a unique ambiance, cuisine, and other amenities to plan the perfect wedding.

Fort Hill Farms, Thompson
(www.forthillfarms.com) Historic farm with gardens, a gazebo beside a pond, and optional tent setup.

Gwyn Careg Inn, Pomfret
(www.gwyncareginn.com) Historic house set in grounds surrounded by specimen trees, century-old rhododendrons, a Spanish Garden surrounded by ten-foot stone walls; rolling hills and picturesque pond.

Inn at Woodstock Hill, Woodstock
(www.woodstockhill.net) Historic country inn, gardens, pastoral surroundings.



Inn at Woodstock Hill

Lord Thompson Manor, Thompson
(www.lordthompsonmanor.com) A country estate transformed into a weekend wedding destination.

Mansion at Bald Hill, Woodstock
(www.mansionatbaldhill.com) Restaurant, banquet center, bed and breakfast on a country estate. Garden weddings.

Stonehurst at Hampton Valley, Hampton
(www.stonehursthampptonvalley.com) Choose an intimate space in the stone mansion for up to 80 people or a renovated barn for up to 299 guests. Spacious grounds.

The Barn at Allen Hill Farm, Brooklyn
(www.allenhillfarm.com) A Christmas Tree farm with views of fields and distant hills offers a classic New England barn with a new full-service catering area and seating for up to 150 guests.

Tyrone Farm, Pomfret
(www.tyronefarm.com) Historic hilltop country estate. Outdoor/indoor options, wedding pergola, bluestone terrace, historic barn, gardens, sun porch and spacious drawing room. From a bygone era, lovingly cared for, and available exclusively for your wedding day.

William Mason House, Thompson
(www.williammasonhouse.com) A historic Connecticut home restored into a luxury country inn, spa and wedding venue (Anya Restaurant).



*We are your local,
friendly, small town,
design, print, & copy center!*



*Let us show you the
ADVANTAGES of
SHOPPING locally!*

Chase Graphics

124 School St. • Putnam, CT 06260

860-928-3973

www.chasegraphics.net



**NORTHEASTERN CT
HEALTHCARE
CREDIT UNION**
INC.

Phone: (860) 928-2347

Fax: (860) 928-1885

320 Pomfret St. Putnam, CT 06260

(Located inside of Day Kimball Hospital)

*Proudly serving healthcare
employees and their families in
Northeastern Connecticut
since 1965.*

Check out our website!

www.NECTHealthcareCreditUnion.org

Welcome to

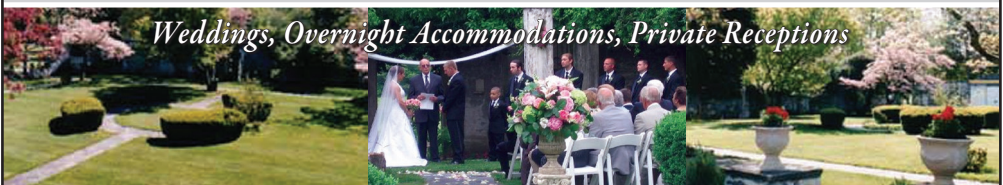
The Gwyn Careg Inn

*"...one of the most spectacular settings for a wedding in
all of Connecticut" – Connecticut Magazine*

Call for an appointment for your personal tour of the estate and visit our website for a preview www.gwyncareginn.com

*68 Wolf Den Road, Pomfret Center, Ct 06259
860-928-5018*

Weddings, Overnight Accommodations, Private Receptions



Places to stay



Gwyn Careg Inn

America's Best Value Inn, Putnam

All rooms have a TV, air conditioning and a private bathroom. Two-star hotel. Book online.

Auberge at Feather Hill, Pomfret

(www.featherhillinn.com) Seven spacious bedrooms with en-suite bathrooms accommodate up to 14 guests. Kitchen, living, and family rooms with fireplaces; indoor and outdoor event space. Lovely grounds and gardens.

Comfort Inn & Suites, Dayville

(www.comfortinn.com) 78 guest rooms, indoor pool, on-site restaurant and business center.

Gwyn Careg Inn, Pomfret

(www.gwyncareginn.com) Five guest rooms with private baths at an elegant Colonial Revival Mansion within 14 acres of greenery and beautiful gardens.

Mansion at Bald Hill, Woodstock

(www.mansionatbaldhill.com) New life for a historic

landmark as a premier restaurant and an elegant bed and breakfast. Private and secluded.

The Inn at Woodstock Hill, Woodstock

(www.woodstockhill.net) Twenty-one comfortable guest rooms in a historic country inn set in pastoral surroundings.

The Watson Boutique Bed & Breakfast, Thompson

(<http://thewatsonboutiquebb.com>) An eighteenth-century getaway on beautiful, historic Thompson Hill. Four guest bedrooms and a two-bedroom suite.

Quiet Corner Inn, Brooklyn

(www.quietcornerinn.com) For business and leisure travelers. Free wireless high-speed Internet, microwave, mini-fridge; book online.

There are also a number of nice rentals in the area on AirBnb.



Mansion at Bald Hill



85 main



"An outing to 85 Main can make you feel like you've been on vacation"

- Worcester Telegram & Gazette



American Fusion Cuisine

fresh, local, organic, sustainable,
artistically driven ingredients

Casual Fine Dining

inviting & contemporary bar atmosphere,
seasonal outdoor dining

**JOIN US FOR
HAPPY HOUR 4-6PM
Wednesday Nights - Bar Only**



**The Bulletin
1st Place Best Sushi
2018, 2019, 2020**

ZAGAT RATED 2016



main

85 Main St. Putnam CT • www.85main.com • 860.928.1660



Events

Photo by Cynthia Saari, Woodstock Fair

Don't miss favorite annual events in northeastern Connecticut. Visiting websites or calling to confirm details highly recommended before you travel. Visit Discover Putnam's website, www.discoverputnam.com/events, for the most current list of events in Putnam. Find events in Killingly at www.killinglyba.org/community and www.facebook.com/Killinglyrecreation/. Another robust local events calendar is regularly updated by The Last Green Valley at <https://thelastgreenvalley.org/tlgv-events/>

FALL

Brooklyn Fair, the weekend before Labor Day, Brooklyn Fairgrounds. Founded in 1809, the country's oldest continuously active agricultural fair. Animals, exhibits, food, games, vendors, live music, other entertainment. www.brooklynfair.org

Corn Maze at Fort Hill Farms

September 5-October 31, Thompson; weather permitting. A new theme to explore every year. Daytime and flashlight nights for thrills after dark. PYO pumpkins. <https://forthillfarms.com/corn-maze/>

Woodstock Fair, Labor Day

The state's second oldest agricultural fair featuring crafts, livestock shows, petting zoo, Midway, contests, concessions, live concerts on the Main Stage, and lots more. www.woodstockfair.com

Walktober, late September through early November, throughout throughout The Last Green Valley National Heritage Corridor. Hundreds of opportunities to explore with FREE guided walks, paddles, hikes, bike rides, historical tours, and more. For the searchable <https://thelastgreenvalley.org/tlgv-events/>

Celebrate Killingly, 2nd Saturday, Davis Park, Killingly: Full of fun activities, delicious food and goods from local businesses. www.facebook.com/celebratekillingly

The Great Tomato Festival, September, Killingly:

Quirky town festival at Davis Park celebrating the garden tomato. Farmer's market, craft vendors, parade, and a food court. Free and open to all.



Thompson Community Day, last Saturday in

September, Riverside Park, N.Grosvenordale. Vendors, food, music, kids' programs, classic car show. <https://www.thompsonct.org/recreation>

Celebrating Agriculture,

Brooklyn Fairgrounds, 15 Fairgrounds Road, Saturday, September 23, 2023. A showcase for the benefits agriculture provides to the region, as well as the challenges farms face today. Displays, family events, food and entertainment. <https://www.celebratingagriculture.org>

Roseland Cottage Arts & Craft Show,

October, the weekend following Columbus Day. Woodstock. A leading New England juried fine arts

and crafts show with 175 artisans, plus food trucks and entertainment. www.facebook.com/RoselandCottage-FineArtsAndCraftsFestival

Great Pumpkin Festival, mid-October, Downtown Putnam: A community celebration of Fall featuring The Great Pumpkin, craft and art vendors, live music, activities for the kids, and more!

Tackle The Trail, 3rd Saturday in October, Airline

State Park; Challenging, fun, well-supported trail race includes marathon, ½ marathon and relay team options. To benefit students and programs at Connecticut State Community College Quinebaug Valley (formerly QVCC) www.tacklethe-trail.org

Zombie Fashion Show,

Late October, Putnam: Popular apocalypse fashion show brings mini-monsters, creepy couples, fiendish families and more.

WINTER

It's Holiday Fair Season! Check out the **Holiday Nature Store** (mid-November through Christmas) at CT Audubon Society's Center on Day Road in Pomfret or the long-running **St. Nicholas Victorian Fair** at Christ Church in Pomfret (1st Saturday in December) raises money for local, national, and international outreach. Also, **The Holiday Store** (open weekends after Thanksgiving) in the Thompson Historical Society building on Chase Road.

Artists' Open Studios of NECT, Thanksgiving and the first weekend December. A free, self-guided adventure to meet more than 80 northeastern Connecticut's artists and artisans in their studios. www.aosct.org

Holiday fun for kids sponsored by Town Parks & Rec during December includes "**Santa Comes to Town**" in Putnam and "**Frosty's Big Night Out**" and "**Breakfast with Santa**" in Killingly.

Holiday Dazzle Light Parade, Sunday after Thanksgiving, Putnam: Floats, music and lights herald Santa's arrival in Putnam.

Fire & Ice, Putnam, February, Downtown Putnam
A great way to celebrate mid-winter and Valentine's Day

with indoor & outdoor fun, including an ice block carving contest, "fire-themed" & other entertainment.

SPRING

Spring Outdoors, from late March through June.

A mostly free series of outdoor activities such as guided walks, hikes, bike rides, paddles, educational fun and more. <https://thelastgreenvalley.org/tlgv-events/>

Pomfret's Town-Wide Tag

Sale, kicks off the region's Tag Sale Season. **First Saturday in May**, with 50 to 60 locations. Profits from map sales and registrations community benefit local groups and causes. <https://www.visitpomfret.com/events-news/>



SUMMER

4th of July Fireworks:

Dates and times for these great local light shows sponsored by Town Parks & Recreation Departments vary each year.

Concerts and River Fire, Rotary Park, Putnam.

For schedule, go to <https://www.discoverputnam.com/events>

Summer Concerts, in Davis Park, Danielson: Free, Thursdays 6-8PM, July through mid-August.

Second Saturdays, Killingly: in Davis Park during June, July & August free, family-friendly festival with games, prizes, local food & artisan vendors, and live music.

Particle Accelerator Concert: Date varies, Rotary Park in Putnam. Showcase of local music to raise awareness of mental health issues, a fundraiser benefiting United Services.

Red, White & Blue BBQ, Killingly, Owen Bell Park
Independence Day celebration with live music, chicken BBQ and fireworks. Not necessarily on the 4th of July.

Main Street Car Cruise, Putnam held in August, gleaming, restored antique cars and trucks and iconic TV and movie show cars to see up close here in the Quiet corner. Contests, food, entertainment.

The Great Outdoors

Photo courtesy of CT National Golf Club

The Great Outdoors

Hiking, biking, birding, boating, golf and more!

Mashamoquet Brook State Park, Pomfret (RT 44)

General Israel Putnam's famous Wolf Den, Table Rock and Indian Chair, well-marked trail system for hikes. Fishing, swimming, picnics.

CT Audubon Center at Pomfret Visitor Center and Bafflin Sanctuary,

Pomfret Visitor Center at 218 Day Road. Bird walks, miles of trails, summer camps and school programs, year-round nature programs, lectures, and workshops.

Goodwin State Forest,

Hampton A CT State Forest with well-maintained and marked hiking, biking & horse trails plus year-round nature programs of all kinds for adults and kids.

Natchaug State Forest, Eastford Horse trails, fishing, and riverfront picnic sites.

Mashamoquet Brook State Park, Pomfret (RT 44)

General Israel Putnam's legendary Wolf Den, Table Rock and Indian Chair; well-marked trail system for hikes, plus fishing, swimming, and picnics.

The Airline State Park Trail

Former railroad bed that runs 55 miles from Thompson to East Hampton, including 20 miles from Pomfret to Wilimantic is now a trail system entered from parking lots at intervals. Part of the CT Rails-to-Trails system and the East Coast Greenway. Explore the flat, gravel trail foot, bike, horseback, or cross-country skis in winter.

Old Furnace State Park,

Killingly South Frontage Rd. (off Rte. 6)



The site of a Revolutionary War foundry, with blue-blazed trails leading to a scenic overlook. Connects to Ross Pond State Park for fishing & hiking.

Pomfret Forest, 150

acres owned by the Town of Pomfret with a new multi-use trail system for hiking, mountain biking, and horseback riding

connecting with the Air Line Trail, Pomfret Recreation Park, Wyndham Land Trust, and New England Forestry Association land. Park at 118 Wolf Den Road. **Find on Facebook.**

Putnam Cyclery, 58 Pomfret Street

Cargill Mill, lower level, Putnam (www.downtownputnamcyclery.com)

Featuring a large showroom for sales and a full-service shop to keep your bike in shape.

Quaddick Lake, Thompson

Swimming, fishing, and boaters; trail system for hiking/ off road biking.

Quinebaug River Water Trail More than twenty miles of waterways to explore by canoe or kayak. For a paddler's guide with safety recommendations, put-ins and routes from Putnam, Thompson, Pomfret and Killingly: www.thelastgreenvalley.org

West Thompson Lake, North Grosvenordale

The Quinebaug River dam maintained by the Army Corps of Engineers provides recreation and natural habitat at a flood control project. Fishing, hiking, mountain biking, seasonal camp ground and disc golf course. Search "West Thompson Lake" for information.

Roseland Park, Woodstock

Historic park on nearly 400 acres of forested land, manicured lawns, sports fields, a public golf course, amphitheater, group campground, fishing dock, and playgrounds. One-half mile of shore line on Roseland Lake, with a boat ramp. Sailing, kayaking, canoeing and paddle boarding and fishing in a state-stocked lake. <http://www.roselandpark.org/>

Owen Bell Park, Dayville

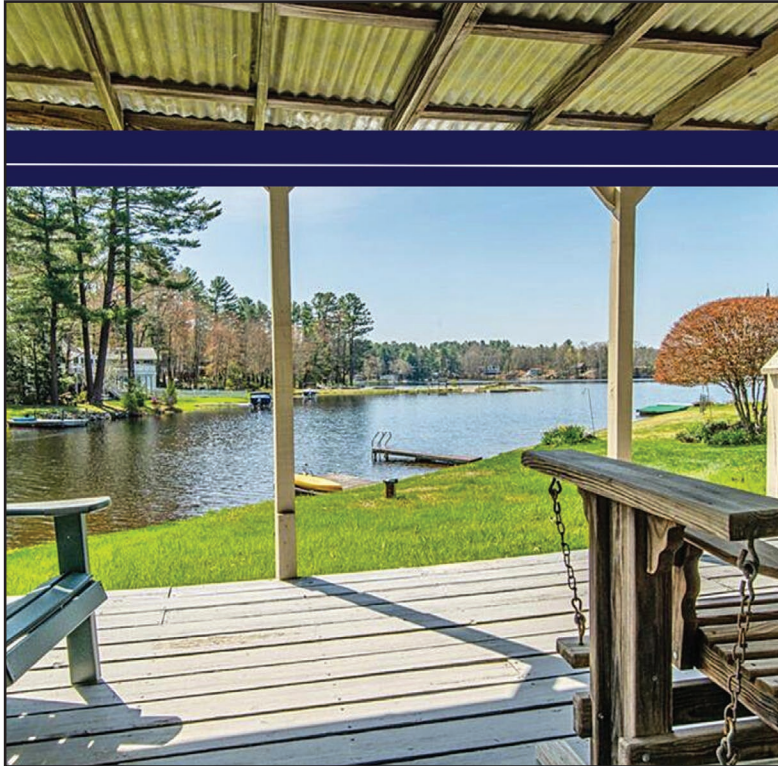
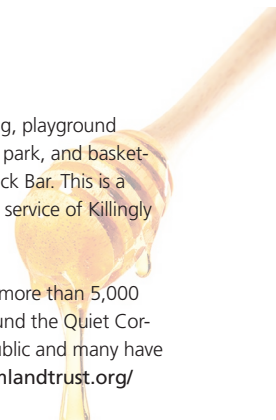
Track and trails for running and walking, playground equipment, sports fields, a skateboard park, and basketball courts. Picnic area and Ra-Ra's Snack Bar. This is a town park open from dawn to dusk, a service of Killingly Parks and Recreation.


The Wyndham Land Trust, protects more than 5,000 acres of land and valuable habitat around the Quiet Corner. Most preserves are open to the public and many have walking trails. <https://www.wyndhamlandtrust.org/>

Thompson Speedway Motorsports Park, Thompson Track schedule and private driving club. Watch or race on the 5/8 mi. high-banked paved oval track with 13,000 seats, and a 1.7 mi. road racing course. <https://www.thompsonspeedway.com/>


Golf Courses open to the public: CT National Golf Club in Putnam, Harrisville Golf Course and Woodstock Golf Course in Woodstock, Raceway Golf Club at the Thompson Speedway & Vineyard Valley Golf Course in Pomfret.

For state park information and locations visit: <https://portal.ct.gov/DEEP/State-Parks/>




CR Premier
 PROPERTIES
 860-315-9070
crpremier.com
 HOMES@CRPREMIER.COM

IT'S YOUR JOURNEY
 LET US TAKE YOU THERE








Photo courtesy of Elm Farm

Meet the Farmers

Orchards, farm stands and “pick your own” farms open seasonally, many have local honey, maple syrup, jams and jellies.

Allen Hill Farm, Brooklyn

is a seasonal Christmas tree farm on 350 acres with thousands of trees of all varieties and sizes. Enjoy wagon rides, free tree baling, a craft barn with locally made goods and maple products plus complimentary snacks. Seasonal wedding venue. www.allenhillfarm.com

Creamery Brook Bison Farm, Brooklyn

Offers group tours on a wagon ride among a herd of buffalo. Call to book a private tour or see their website for public tours in October.

www.creamerybrookbison.net

We-Lik-It Ice Cream Stand, Pomfret Center

Visit the animals and the farm market while enjoying your ice cream. www.welikit.com

Fairvue Farms, Woodstock

Is a working dairy farm with 700 Holsteins that gives free tours by appointment.

www.fairvuefarms.com

Buell's Orchard, Eastford

Pick your own strawberries, blueberries, peaches, apples plus events. www.buellsorchard.com

Lapsley Orchard, Pomfret

Farm produce, pick your own fruits, wagon rides. www.lapsleyorchard.com

Woodstock Orchards, Woodstock

Apples and cider, PYO blueberries, retail store for farm-grown vegetables, mums, jams, and jellies, plus an expanded bakery. <http://woodstockorchardsllc.com/>

Farmer's Market locations in Putnam, Danielson, Brooklyn & Plainfield. Meet the growers and makers selling their own produce, plants and flowers, beef, poultry, cheese, honey, jams and jellies, maple syrup and baked goods. www.nectfarmersmarket.org and <http://www.putnamfarmersmarket.org/>

Unbound Glory Homestead, Pomfret

Offers heirloom vegetables at local farmer's markets plus BBQ catering/food truck and NEW wood-fired pizza on select dates on the farm. www.unboundgloryfarm.com

Farm to Table Market, Woodstock

Gaze at Elm Farm's dairy cows while eating ice cream; take home local dairy, meat, produce and other goods. Online ordering. www.elmfarm.net

At Woodstock Creamery, Woodstock,

Farm dairy producing milk (including flavored milks), skyr, and labneh. Also available local meats, and other agricultural products. <https://woodstockcreamery.com>

Renee's Bistro & Catering SERVICE

860-412-9365

Full Service, Off-Site, Deliveries & Pickups, Catering Available for Any Event, Any Size, Anytime!

Let Renee's Bistro & Catering Service Do All the Work for You.



Corporate Catering & Catering of all types are our specialty.

Stop in to our Bistro for Lunch or Dinner - Grab & Go, Dine In or Take Out



142 School Street, Putnam, CT
Tel: 860-412-9365 • Support@ReneesBistroAndCatering.com
www.reneesbistroandcatering.com

WYNDHAM
LAND TRUST, INC.

Explore
y(our)
Preserves!

www.wyndhamlandtrust.org

WOODSTOCK BUILDING ASSOCIATES, LLC

The Leader in Design-Build

WOODSTOCK, CT

3 Route 171

860-928-0897

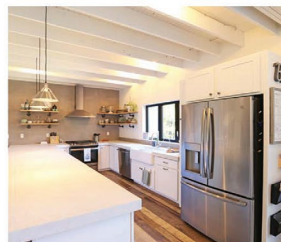
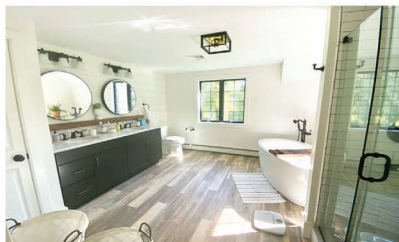


FRANKLIN, MA

15 Main Street, Suite 11A

508-570-4853

From design to completion, our architects, designers, estimators, project coordinators, superintendents, carpenters, and plumbers work as a team to ensure consistently superior craftsmanship for your project. Design and building costs are tailored to fit your needs without compromising quality. If you are looking for an experienced, organized, professional, and cost conscious design-build company, call Woodstock Building Associates today!



MA Home Improvement Contractor #119085 - MA Construction Supervisor #111269 - CT Home Improvement Contractor #565903 - CT New Home Construction Contractor #160

REMODEL - NEW CONSTRUCTION - KITCHENS & BATHS - ADDITIONS

Come home and welcome the seasons at Christopher Heights Assisted Living!

Christopher Heights offers unique senior lifestyle plans to fit every season of your life! In our community you will be surrounded by the support and understanding of your Christopher Heights family. You will also enjoy quality care, well-balanced meals prepared with fresh seasonal ingredients,



lively group activities, and your own private apartment. Don't weather the seasons alone, let us take care of you in your new home!

To learn more about our senior lifestyle plans, please contact **Laura Crosetti** at **508-671-4106**. We would love to hear from you!



CHRISTOPHER HEIGHTS™
of Webster
AN ASSISTED LIVING COMMUNITY

338 Thompson Road • Webster, MA 01570 

For more information or to take a virtual tour of our communities, please visit our website:

www.christopherheights.com



Fulfillment



Commitment



Friendship



Longevity



Comfort

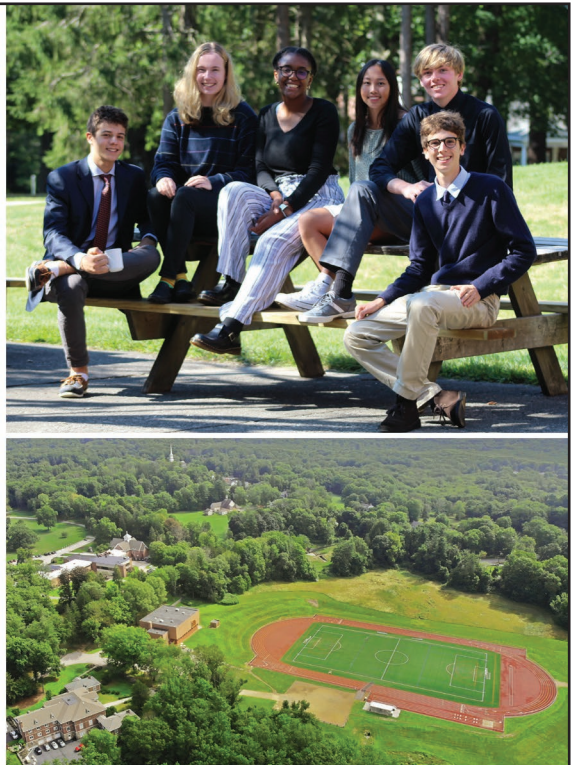
PREP MARIANAPOLIS

A *vibrant* and *innovative* independent Catholic boarding and day school.



26 Chase Road
Thompson, CT 06277

860-923-9245
admission@marianapolis.org
www.marianapolis.org



www.quietcornerinn.com

*Newly Renovated • Cable TV with HBO
Non Smoking Units Available • Micro / Fridge Available
Air Conditioned • Dataport / Phones
Hairdryers In All Rooms • Free Highspeed Internet*

Exit 37-W Off 395 • Rt. 6

Major Credit Cards Accepted
Minutes From Foxwoods Casino & Mohegan Sun

860•774•9644

479 Providence Rd. (Rt. 6) Brooklyn, CT



Private & Independent Schools



Pomfret School

Pomfret School, Pomfret

Founded in 1894, Pomfret School is an independent boarding and day school serving grades 9–12, plus postgrads. Set on a stunning 500-acre hilltop in North-eastern Connecticut, our students come from around the country and the world to find purpose and meaning in their lives through a transformational educational experience. In 2023 Pomfret was ranked one the of the best private high schools in America. To see how we're inspiring the next generation of change-makers and problem solvers, visit us on line and on campus.

www.pomfret.org



Marianapolis Preparatory School

Marianapolis Preparatory School, Thompson

Ignite your extraordinary at Marianapolis, an independent, Catholic, boarding and day school located in Thompson, CT. Here, students in grades 9-12 and postgraduates live and learn alongside faculty members, embrace growth through a liberal arts curriculum rooted in experiential learning, make a social impact through

community service, and graduate as confident, engaged citizens, ready to lead in an ever-changing world.

Explore all that Marianapolis has to offer!

- LEAP Week, a project-based mini term where students explore subject areas of interest, including traditional academics, the arts, community service, cultural immersion, and more, at sites across the country.
- A rigorous curriculum including 22 AP course offerings and opportunities to explore nearly 100 different courses of study.
- The Centers of Excellence, where students engage through targeted course modules, projects, and internships in three Centers: Innovation, Business & Entrepreneurship, and Social Justice.
- Extensive co-curricular offerings, including more than 30 clubs and organizations, dozens of leadership opportunities, and 17 interscholastic athletic and extracurricular programs.
- Weekend programming - activities ranging from goat yoga and river rafting, to cranberry bogging and glass blowing.

A 100% college acceptance rate. Throughout the college process, students are supported and guided by our College Placement team, as they consider their futures beyond Marianapolis and embark on their next steps - prepared for college and for life.

At Marianapolis, every student makes an impact and every student discovers what inspires them to become eager and enthusiastic lifelong learners. Reach out to learn more! www.marianapolis.org



Congregational Church of Putnam

175 Main St., PO Box 463
Putnam, CT 06260
(860) 928-4405
putnamconchurch@gmail.com
Sunday Worship 10:00 am



"Our Goal is to Provide you with the Best Possible Service in Combination with the Best Quality Ingredients on the Market!"

Bring the Taste of Pizzazz Home Tonight!



136 Main Street
Danileson, CT 06239
860.774.8500

Monday - Saturday 11am - 9pm • Sunday 12pm - 8pm



www.letseat.at/pizzapizzazz



GERARDI INSURANCE



PUTNAM • KILLINGLY
860.928.7771
GERARDIONLINE.COM

We have been getting our customers the right coverage at the right price for over a century. Become a customer and find out why.



PERSONAL • BUSINESS • BENEFITS • MEDICARE



Rectory School, Pomfret

Rectory School is an independent, co-ed junior boarding (Grades 5-9) and day (Early Childhood-Grade 9) school. With support, guidance, attention, and belief from the adults who surround them, Rectory students do the

only matched by its dedication to innovative education. Its diverse and challenging course offerings, state-of-the-art STEM and Arts facilities, and celebrated athletics programs help to foster an environment of growth and discovery for the next generation of global citizens. Learn more at www.woodstockacademy.org

Quinebaug Middle College, Danielson

Located on the peaceful campus of Quinebaug Valley Community College (QVCC) in Danielson, QMC offers high school students a middle college experience that enables them to earn a high school diploma while taking college courses, transferable college credits from QVCC. Our scholars select from one of our six learning



hard to work to not only understand themselves but also to be a part of an active and diverse community. Our students are surrounded by adults who create a compelling environment that offers challenge and support. Together we are committed to a simple idea: each of us has something to learn, and something to offer. At Rectory, we build a foundation of core academic skills, create powerful learning experiences both inside and outside the classroom, and foster strong ethical and social values. The result is students who understand themselves and the world around them. Rectory students can speak frankly about their strengths and where they need to improve. Rectory students aren't just ready for their next school; they are ready for life.

www.rectoryschool.org

The Woodstock Academy, Woodstock

Established in 1801, The Woodstock Academy is one of the oldest independent high schools in the nation and has grown to serve co-ed day and boarding students from all over the world. WA's reverence for tradition is



pathways: Liberal Arts and Humanities, Education, Business Leadership, Engineering, Manufacturing, and Allied Health Sciences. Core academic and elective courses and mentorship opportunities are aligned to the individual learning pathways. In addition, our scholars gain real-world experience in project management, public communications, and community organization and leadership. Enrollment is not limited to students in northeastern Connecticut. www.eastconn.org/qmc



Connecticut State Community College Quinebaug Valley (formally QVCC) Danielson

QVCC provides high-quality education, workforce training, excellent services and innovative partnerships that enhance the vitality of the community and improve the quality of life for residents of northeast Connecticut. The word “community” in the college’s name reflects a strong commitment to understand and to meet the educational needs of area citizens, businesses, and industries. At QVCC you can earn an associate’s degree, transfer to a four-year college or university, begin or advance your career, or enrich your life through lifelong learning. www.QVCC.edu

ACT - Arts at the Capitol Theater Performing Arts Magnet High School Willimantic

ACT is a full-day, comprehensive, public, performing arts magnet high school located in the Capitol Theater in downtown Willimantic. Curriculum and instruction are guided by a personalized, competency-based framework. Students engage in integrated arts projects, and instruction is personalized to address individual learning needs. Students study with certified academic teachers

and professional artists in this small, arts-focused learning community. Each grade is limited to about 35 students, making this an intimate, focused, artistic learning environment for students in grades 9–12. Students who reside in the partner towns of Eastford, Killingly, Norwich, Plainfield, Stafford, Windham, and Woodstock have the benefit of a secured number of ACT seats. Students from other Connecticut towns are admitted through an application process. www.eastconn.org/act

Putnam Science Academy, Putnam

Putnam Science Academy is a private co-educational boarding and day school serving students from grades 8-12 and post graduates. PSA offers a comprehensive college preparatory program focusing on arts, science, mathematics, and technology. This small structured school delivers a solid educational program and enrolls students from more than 30 countries from around the world. With a 100% college placement rate, most of our student athletes move onto Division I or II schools with scholarships. Nestled in the quiet corner of Connecticut, Mustang students are able to be a part of a strong proud community that prides itself on teamwork and dedication. www.putnamscienceacademy.org



**HANDCRAFTED
LOCALLY OWNED**



**COFFEE, BREAKFAST, LUNCH,
DESSERTS & MORE**

Full Liquor License - Serving Your
Favorite Cocktails

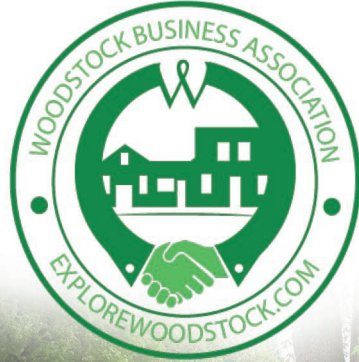
Live music every Friday and
Saturday nights 7:30pm-10:30pm



91 Main Street, Putnam, CT 06260 • 860-315-9028
Hours: Mon. & Tues. 8am-5pm • Wed. & Thurs. 8am-8pm
Fri. & Sat. 8am-11pm • Sun. 8am-5pm

www.sawdustcoffeehouse.com

**EXPLORE THE
CHARM OF
WOODSTOCK, CT**



explorewoodstock.com



"You'll Love Your New Home."

**CR Premier
PROPERTIES**

860.455.5363

crpremier.com



Licensed in CT & MA



**Vivian Kozey
Realtor**

260 Route 171
Woodstock, CT 06281

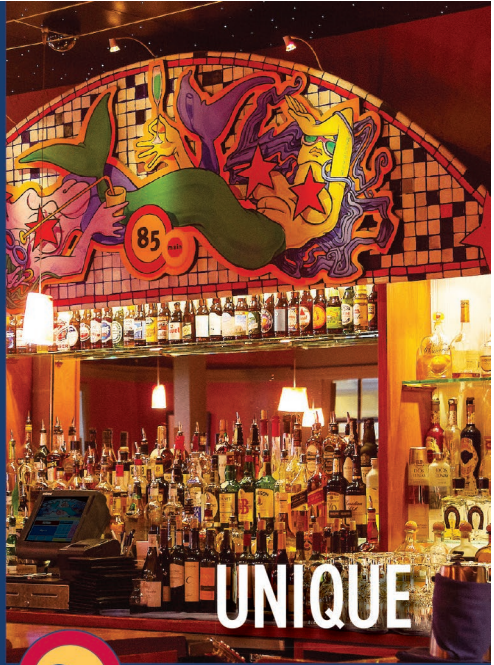
vivian@crpremier.com



FRESH



450 DEERFIELD RD. POMFRET, CT
vanillabeancafe.com



UNIQUE



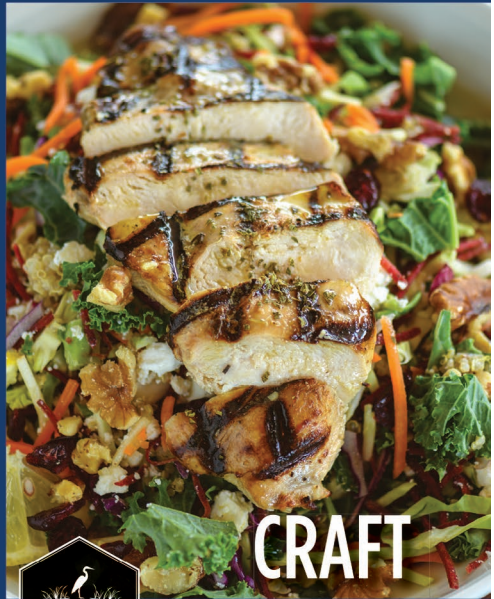
85 MAIN ST. PUTNAM, CT
85main.com



QUALITY



1 DOG LANE STORRS, CT
doglanecafe.com



CRAFT



135A STORRS RD. MANSFIELD, CT
fentonrivergrill.com



Creating Unique Dining Experiences in Northeastern Connecticut
greenvalleyhospitality.com



POMFRET

be heard

your voice is powerful at Pomfret

We are a private high school for boarding and day students located in Northeastern Connecticut. In 2023, Pomfret was ranked one of the top independent schools in the country.

Learn more at [Pomfret.org](https://www.pomfret.org).

To arrange for a tour and interview, call our Admissions Office at 860.963.6120 or email admissions@pomfret.org. Financial aid available.