



2024-2025 / Complimentary

visitnect

Northeastern Connecticut's Premier Visitor Guide

Serving the towns of Pomfret, Woodstock, Putnam,
Thompson, Eastford, Brooklyn & Killingly



Dining, **Shopping**, Arts, **Accommodations**, Scenic Beauty, **History**, Agriculture, **Business**



BED & BREAKFAST • FINE DINING RESTAURANT
EVENT VENUE • BANQUET CENTER

29 PLAINE HILL RD. WOODSTOCK, CT 06281
860.974.3456 • info@mansionatbaldhill.com
mansionatbaldhill.com



WE DON'T JUST WORK IN YOUR COMMUNITY WE ARE YOUR COMMUNITY

At Day Kimball Health, our mission is meeting the health needs of our community. And with the hospital, four healthcare centers and medical group offices conveniently located in Danielson, Dayville, Plainfield, and Putnam, we pride ourselves on achieving the highest national standards. That's Day Kimball Health.

Healthcare in motion.

DKH DAY KIMBALL HEALTH

daykimball.org



visitnect

Northeastern Connecticut's Premier Visitor Guide



Dubbed The Last Green Valley because that's how we look from the air at night, northeast Connecticut has so much on the ground for visitors to share in and enjoy. Rolling hills and fields, stone-walls, historic mills and villages tell of an agricultural and industrial past to explore by car, bike or on foot.

Today many farmers welcome visitors and take their produce to the local farmers' markets. Nature preserves, riverbanks, and abandoned rail lines have become hiking trails. Factories are transformed into housing. Ingenious artisans, restaurateurs, and antiques dealers with creative business ideas take over Main Street storefronts and other sites that bring energy to our historic settings. Also known as the Quiet Corner or the Tri-State area, there are no major cities or a firm boundary, but virtual visits to our communities can be made via the Internet and an even better experience in person.

Browse these local websites for more information!

Brooklyn www.brooklynbusinessassociation.org

Eastford <https://www.ctvisit.com/listings/town-eastford>

Killingly/Danielson www.killinglyba.org

Pomfret www.visitpomfret.com

Putnam www.discoverputnam.com

Thompson www.thompsonct.org

Woodstock www.explorewoodstock.com

A regional resource for discovering northeast CT is through the **The Last Green Valley, Inc. (TLGV)** that serves 35 towns astride the Connecticut-Massachusetts

border. The organization connects residents and visitors with the diverse natural, historical, and cultural resources found here. Robust calendars of staff and volunteer-led outdoor events extend from the Spring Equinox to the Summer Solstice early in the year to Walktober, an "outdoor season," with events planned from mid-September into early November. Over the year are a couple of hundred hikes, paddles, and tours across the region. TLGV is supported in part by members who believe in its mission. The Last Green Valley National Heritage Corridor. www.thelastgreenvalley.org



Main Street & Country Towns...

Main Streets in Putnam and Killingly's borough of Danielson, once prosperous factory towns, have a stock of historic brick and stone storefronts and multi-use river-front recreation areas. Both have convenient, free public parking and a welcoming, walkable scale. Brooklyn, Eastford, Pomfret, Thompson, and Woodstock proudly retain their town commons and a slower pace.

Downtown Putnam was once hailed as the "Antiques Capital of New England," and some antiques and collectibles businesses remain there and in the area. Putnam has evolved into a center for arts and culture and a popular dining and entertainment destination. Putnam offers an eclectic mix of restaurants, galleries, and

boutique stores anchored by the Antiques Marketplace at the corner of Main and Front Streets. The Bradley Playhouse offers annual seasons of drama, musical theater, and special events. Street festivals are a draw throughout the seasons (<https://www.discoverputnam.com/events>); the riverside Rotary Park has a bandstand for outdoor concerts, and occasional River Fires. A full range of places to eat is a newer Putnam tradition. Looking for breakfast, lunch, or dinner, a drink, a late-night snack, or ice cream? Other categories to choose from: ambience, cuisine, price point, special occasion, family-friendly, Thai, Chinese, sushi, pizza, outdoor dining - all are options.

Danielson offers its own distinctive mix of shopping and dining on a smaller scale on Main Street. And don't miss what Brooklyn, Pomfret, and Thompson have to offer!



Rotary Park, Putnam, CT

TABLE OF CONTENTS:

- 6-7 Dining
- 8 Drink & Be Merry
- 10-13 Shopping
- 14 Weddings
- 16 Accommodations

- 18-19 Annual Events
- 20-21 The Great Outdoors
- 22 Meet the Farmers
- 26-29 Private & Independent Schools

It is our pleasure to introduce the 2024-2025 **Visitnec** Visitor Guide. Our goal is to promote northeastern Connecticut as a 'destination location' and to encourage residents to shop locally. This visitor guide was inspired and generously supported by the many creative businesses who share our vision. We would like to thank all of the advertisers and the individuals who have made this publication possible. There are hundreds of unique businesses throughout the area—too many to list. Therefore, we have compiled the copy and listings that include businesses who participated. *The next issue will be released in Fall 2025!*

45 minutes from Providence and Hartford • 1 hour from Boston • 3 hours from New York City

www.visitnortheasternct.com

This publication is
Published & Distributed by:

GDP

GLOBAL DESIGN & PUBLISHING LLC

860-382-3832 • kelly@gdpublishing.com
www.visitnortheasternct.com

Design: Jim Tourtellotte

Marketing & Sales: Kelly Tourtellotte

Writer/Editor: Caroline Sloat & Kelly Tourtellotte

All design and text is provided by Global Design & Publishing, LLC. Text and images have been carefully compiled for this publication. However, we do not guarantee the accuracy of the content.

Photos provided by Global Design & Publishing, LLC and local businesses.

Center top cover photo courtesy of Sawdust Cafe; Right Car Cruise cover photo courtesy of WINY Radio

Copyright ©2024, Global Design & Publishing, LLC. Any reproduction without our written permission is prohibited.

Dining

85 Main Restaurant

Even here in the country, you can find worldly cuisines such as Thai food and sushi, but our favorite local restaurants use farm-fresh local produce and other homegrown food products whenever possible. Here are some ideas to whet your appetite...

FINE & CASUAL DINING (plus Sunday brunch)

Brooklyn

Hanks

Homestyle cooking. Lunch and dinner daily.
www.hanksrestaurant.com

Grill 445

Soups, salads, wraps, burgers, pasta, seafood, specials & more.
www.grill445.com

Sweet Peas Fine Foods and Farm Market

Specialty foods and chef-prepared meals, baked goods and groceries. Seasonal fresh vegetables. Takeout and catering to go.
www.sweetpeasfinefoods.com



Dayville

Golden Greek

Family restaurant Lunch and dinner daily, bar and lounge with flat screen TVs.
 Find them on Facebook



Pomfret

Grill 37

Steakhouse, bar, and banquets. Local seafood. Sunday brunch menu. Wednesdays through Sundays.
www.grill37.com

Vanilla Bean Café

Breakfast, lunch & dinner, outdoor patio. House-made soups and chili, salads, sandwiches, burgers and daily specials with fresh local ingredients. Live music events November to April.
www.thevanillabeancafe.com

Putnam

85 Main

Upscale American Fusion Cuisine offering lunch & dinner plus sushi, raw bar, wine cellar & late-night bar menu. Locally sourced daily specials. Open seven days for lunch and dinner. www.85main.com

Black Dog Bar and Grille

Sandwiches, salads, steaks, chicken, and seafood. Pub menu with grill-fired pizzas, breads, and sandwiches. Happy hour with food discounts.
www.blackdogbarandgrille.com

Courthouse Bar and Grill

In Putnam's 1889 Courthouse, so that's the theme: The Docket ranges from Opening Statements through Closing Arguments, a full menu of sandwiches and plated meals. Daily happy hour with tacos.
www.courthousebarandgrille.com

Elizabeth's Farmhouse

Lunch, dinner, drinks in an intimate setting. Seasonal ingredients a feature. Wednesday through Saturday.
www.elizabethsfarmhouse.com

Renee's Bistro and Catering

Dine in at lunch or an early dinner. Grab & Go, plus a full menu to plan a catered event.
www.reneesbistroandcatering.com

Saw Dust Coffee House

Coffees, breakfast and lunch with freshly made baked goods and desserts. Full liquor license. Live acoustic music on Friday and Saturday nights.
www.sawdustcoffeehouse.com

The Hare & The Hound

Irish-themed menu serving traditional dishes with a contemporary twist. Patio dining in Union Square.
www.thehareandthehound.com

Thompson

Anya

Dining with a French flair in a contemporary setting. Wine, cocktail, and food menus evolve with the seasons. Weds through Sunday. www.anyadining.com

Woodstock

Mamma Italia Ristorante

Italian cooking—appetizers, soups, salads, entrées, and desserts. Lunch and dinner. BYOB. Tuesday through Saturday.
www.mammainitalia.com



Mansion at Bald Hill

Dine in an elegant Old World mansion. Specialty salads and entrees feature seasonal local ingredients. Bed and breakfast; banquet center. Tuesday through Sunday.
www.mansionatbaldhill.com

Multple Locations

The Baker's Dozen

Coffee shop with donuts, bagels, sandwiches. Eat in or drive through. In Brooklyn, East Putnam, Pomfret, Putnam, plus Central Village, Gales Ferry, Norwich, and Plainfield. www.bakersdozenct.com

More eating like a local (plus Pizza & Ice Cream)

Brooklyn

Jonny's Pizza • Brooklyn Pizza • Classic Pizza & Family Restaurant

Danielson/Killingly

Chubby Dog Gaming Bar • Heirloom Food Company • Jade Garden • Sugarz Bakery • Pizza Pizzazz • New York Pizza Co. • George's Galley

Dayville

Crowe's Nest, LLC • Zip's Diner • Yamato Steak House of Japan • Mexican Grill • Railside Tavern • 4 G's Restaurant and Pizza • Ra-Ra's Ice Cream Shop • The 99 • Golden Greek

Pomfret

Pizza 101 • We-Li-Kit

Putnam

Bill's Bread and Breakfast • The Broken Crust • Chubby Dog Coffee Co. • Deary Bros. Mike's Stand (seasonal) • Henry's • Jade Garden • Leona's Baking Co. • Main Street Gelato • Mainely Seafood • Marika's Place • Nikki's Dog House • The Painted Baker • The Quarterback Club • Riverview Ice Cream and Miniature Golf (seasonal) • Slice of Heaven • Thai Chili Pho • Thai Place • Uptown Sandwiches

Thompson

A La Mode Market • Bogey's Ice Cream (seasonal) • Frank's Milltown Grill • LB's Family Restaurant • Mack's Catering • Riverside Pizza • Thompson House of Pizza

Woodstock

Buck's Soft Serve (seasonal) • Farm to Table Market • Soleil Bakery • Thai Basil • Woodstock Creamery • Woodstock Tavern • Woodstock Trading Post Country Stand • Woodstock Valley Country Store & Café

Drink & Be Merry



Bear Hands Brewing Co.

Bear Hands Brewing Co., Putnam

Brewing on site, tap room, pub fare, dog-friendly patio Growlers to-go.

www.bearhandsbrewing.com

Black Pond Brews, Dayville

On-site brewery with tasting room—full pours and flights. German and Italian-inspired food.

www.blackpondbrews.com

Sharpe Hill Vineyard, Pomfret

Tasting room open weekends. Award-winning wines can be purchased at locations nearby and farther afield.

www.sharpehill.com

Taylor Brooke Winery & Brewery, Woodstock

Family-owned on-site winery (since 2004) and brewery (since 2019) on 40 scenic acres; weekend food trucks.

www.taylorbrookewinery.com
www.taylorbrookebrewery.com

The Boroughs Brewing Company, Danielson

Taproom and outdoor patio, also CT-made ciders and wines. Canned cocktails and spirits. Thursday through Monday. www.theboroughsbrewing.com

The Crossings, Putnam

Bar and restaurant serving pub-style food at lunch and dinner in Putnam's restored historic train station. House brews on tap, guest taps feature New England craft breweries.

crossingsbrewpub.com

The Stomping Ground, Putnam

Live music and art venue with extensive menu, craft beers on tap. <https://the-stomping-ground.com/>



Watercure Farm Distillery

Treehouse Orchard and Farm Fermentory, Woodstock

cider and draft beers on draft and to go. Thursday through Sunday. Also in MA: Charlton, Deerfield, Sandwich, Tewksbury. <https://the-stomping-ground.com/>

Watercure Farm Distillery, Pomfret Center

Spirits distilled on site from local crops. Tasting room featuring flights and cocktails with our own whiskey, bourbon, brandies, vodkas, and apple-spice flavored rum. Bottle sales and light food.

<https://watercurefarm.com>

85 main



"An outing to 85 Main can make you feel like you've been on vacation"

-Worcester Telegram & Gazette



American Fusion Cuisine

fresh, local, organic, sustainable,
artistically driven ingredients

Casual Fine Dining

inviting & contemporary bar atmosphere,
seasonal outdoor dining

**JOIN US FOR
HAPPY HOUR 4-6PM
Wednesday Nights**



**The Bulletin
1st Place Best Sushi
2018, 2019, 2020**

ZAGAT RATED 2016



main

85 Main St. Putnam CT • www.85main.com • 860.928.1660



Local Shops

"Good things come to those who shop local." Quiet Corner shopkeepers are passionate about their business niches; purveyors of food and other services pay serious attention to finding distinctive wares and amenities. For all who appreciate attentive and friendly customer service, handmade and one-of-a-kind gifts, and just-plain exploring, there is great fun and treasures to discover around every corner. Most Putnam shops are clustered for walking, as are Danielson's; Woodstock's shops are dispersed and require a car, as do shops in other towns.

Antiques Marketplace,
109 Main Street, Putnam
(Find them on Facebook)
350 dealers of antiques and vintage, glass, silver, jewelry and vintage clothing to furniture, clocks, art, toys & more.

Arts & Framing
136 Main Street, Putnam
(Find them on Facebook)
Quality custom framing and restoration plus art gallery featuring local artists.

August & March Home
130 Main Street, Putnam
(www.augustmarchhome.com)
A specialty shop offering a wide variety of traditional, vintage, and modern home goods & home decor.

BLOCK 134 Arts & Wellness Co-Op,
134 Main Street, Putnam
(Find them on Facebook)
Integrative health and wellness resources in partnership with yoga instructors and private practitioners offering



art therapy/
mental
health
counseling,
massage therapy, and nutrition/
health coaching services; home
of Silver Circle Art Gallery.

Black Walnut Farm Shops
218 Rt 169, Woodstock
(Find them on Facebook)
Three shop spaces with
distinctive home décor and

accessories; gifts for everyone on any occasion; featuring
local musicians, authors, and artists.

Christmas Barn
835 Route 169, Woodstock
The big red barn is filled with Christmas and rustic
country décor. Open August through December.

Danielson Surplus
151 Main Street, Danielson
(Find them on Facebook) Work and casual clothing
and footwear, sports equipment. Family outfitters.





Green Valley Floral Design



**HOP
LOCAL**

Frankly Toys and Antiques

199 Providence Street, Putnam
(Find them on Facebook)

Vintage toys, die-cast cars, collectables, country accents, home décor. Thursday through Sunday.

Green Valley Floral Design

30 Putnam Road, Pomfret
(www.greenvalleyfloraldesign.com)

Fresh flowers and plants, gifts for the home/garden; weddings, monthly floral subscriptions.

Harvest Moon Health Foods

554 Liberty Hwy., Suite 4, Putnam

(www.harvestmoonhealthfoods.net) Healthy foods, supplements, and beauty products. Homeopathic remedies and advice.

Heart & Home

65 Main Street, Danielson
(www.heartandhomect.com)

Home furnishings and gifts including Yankee Candles, Byers Choice, Vera Bradley, Troll Beads, and Ty toys. Quilting fabrics and classes.

Jeremiah's Antiques & Collectables

26 Front Street, Putnam

(Find them on Facebook) More than 70 dealers with an eclectic mix of antique and old, rare and unusual.

Little Falls Nutrition

6 Pomfret Street, Putnam

(<https://littlefallsnutrition.com>)

Protein shakes, energy drinks, hot and iced teas, immunity boosts, fruit smoothies, snacks; nutrition club.

Logee's Greenhouse

141 North Street, Danielson
(www.logees.com)

Tour the historic greenhouses to gaze on fruiting, rare, and tropical plants growing year-round. Begonias, orchids, succulents...fragrant or rare, so many choices and all you need to grow them.



A Fun Boutique in Downtown Putnam

Clothing ~ Jewelry ~ Gifts
Featuring Fair Trade and Made in America

75 Main Street, Suite #3
Putnam, Connecticut • Tel: 860-315-9126



Silver Circle Art Gallery

M's Boutique

75 Main Street, Suite 3, Putnam
(www.msboutique.net)

Stylish fair trade and made in America apparel, jewelry, and gifts. Thursday through Sunday.

Pourings & Passages

103 Main Street, Danielson
(www.pouringsandpassages.com)

Used book store and coffee house. Well organized and large selection of quality used books sold to benefit St. James School. DVDs, CDs, vinyl, religious items, arts and crafts with a book and reading theme, and gifts. Wednesdays through Saturday.

Rusty Relic

599 Rte 169, Woodstock (Find them on Facebook)
Amish-made furniture and home décor; antiques and primitives.

Sawmill Pottery

112 Main Street, #14, Putnam
(www.sawmillpottery.com)

Art gallery showcasing and selling select work by studio potters and other local artisans making jewelry, sculpture and more. A working studio offering classes, workshops, and studio time for all ages.

Scranton's Shops

300 Route 169, South Woodstock
(<https://scrantonssshops.com>)

A multi-dealer shop with antiques, crafts, and gifts in a historic former blacksmith shop.

Silver Circle Art Gallery

Upstairs in Block 134 Main Street, Putnam
(Find them on Facebook)

Gallery with curated exhibitions, handmade gifts, art classes for all ages.

Silver Circle Art Gallery

Upstairs in Block 134 Main Street, Putnam
(Find them on Facebook)

Gallery with curated exhibitions, handmade gifts, art classes for all ages.

Sparrow Soaps

350 Kennedy Dr, Putnam
(www.sparrowsoaps.com)

Soaps & lotions made from the rich milk from their happy herd of dairy goats. Goat milk is loaded with vitamins and minerals that help nourish and revitalize dehydrated skin.

Stoveking

80 Front Street, Putnam
(www.stoveking.net)

High quality heating solutions; exceptional customer service. Family-owned.

The Arc Emporium

22 CT-171, Woodstock
(www.thearcct.org)

Charity thrift shop. New and gently used clothing, jewelry, accessories, furniture, and household items.

The Shoppes at Montgomery Ward

112 Main Street, Putnam (Find them on Facebook)

A mall on Main Street; shops on all levels.

Twigs & Pearls

136 Main Street, Putnam-in the Arts & Framing Shop (find them on Facebook) Rustic and refined

mix of handmade jewelry and gifts. Popular socks, soaps, greeting cards.

Thrift Happens

253 CT-169, Woodstock (find them on Facebook)

Consignment shop and boutique offering timeless quality pieces looking to make their encore appearance!



Woodstock Country Shoppe

Wolperdinger Bookends

112 Main Street, Suite 13, Putnam
(www.wolperdinger.shop/)

Eastern CT's largest comics, collectibles, and games.

Wonderland Comics

160 Main Street, Putnam

(www.wonderlandcomics.com)

Eastern CT's largest comics, collectibles, and games.

Woolworks Yarn Shoppe

154 Main Street, Putnam (Find them on Facebook)

Yarns, knitting, and needlework patterns and supplies. Classes and individualized instruction.

Woodstock Country Shoppe

47 CT-171, Woodstock

(www.woodstockcountryshoppe.com)

Country primitives and furniture, candles, tinware, textiles and paints.



POMFRET, New England to the roots...

SCENIC • HISTORIC • GRACIOUS • DELICIOUS



www.VisitPomfret.com

Weddings & Special Events



Mansion at Bald Hill

Gorgeous country settings draw couples seeking a destination wedding to the Quiet Corner. Three international airports and major highways solve the problem of “getting there.” Each location is unforgettable, with backdrops of historic architecture, lush gardens and rural vistas and yes, contemporary and new are part of the mix. Each offers a unique ambiance, cuisine, and the other amenities to create the perfect wedding.

Fort Hill Farms, Thompson

(www.forthillfarms.com) Historic farm with gardens, a gazebo beside a pond, and optional tent setup.

Gwyn Careg Inn, Pomfret

(www.gwyncareginn.com) Historic house and grounds framed by specimen trees, century-old rhododendrons, Spanish Garden surrounded by ten-foot stone walls, and a picturesque pond framed by rolling hills.

Lord Thompson Manor, Thompson

(www.lordthompsonmanor.com)

A country estate transformed into a weekend wedding destination.



William Mason House

Mansion at Bald Hill, Woodstock (www.mansionatbaldhill.com)

Restaurant, banquet center, bed and breakfast on a country estate. Garden weddings.

Stonehurst at Hampton Valley, Hampton (www.stonehursthamp-tonvalley.com)

The stone mansion is an intimate event space for 80 guests and the renovated barn accommodates up to 299 guests. Spacious grounds.

The Barn at Allen Hill Farm, Brooklyn (www.allenhillfarm.com)

A Christmas Tree farm with views of fields and distant hills offers a classic New England barn with a new full-service catering area and seating for up to 150 guests.

The Inn at Woodstock Hill, Woodstock (www.woodstockhill.net)

Historic country inn, gardens, pastoral surroundings.

Tyrone Farm, Pomfret (www.tyronefarm.com)

Historic hilltop country estate from a bygone era. Outdoor/indoor options, wedding pergola, bluestone terrace, historic barn, gardens, sun porch, and drawing room.

William Mason House, Thompson

(www.williammasonhouse.com) A historic Connecticut home restored into a luxury country inn, spa and wedding venue (in association with Anya Restaurant).



Congregational Church of Putnam

Rev. Pamela Briddle
175 Main St., PO Box 463
Putnam, CT 06260
(860) 928-4405
putnamconchurch@gmail.com
Sunday Worship 10:00 am
All are welcome!



the STONELEDGE B&B INN



COME STAY WITH US!

Make us your home away from home! Located in the "quiet corner" of Connecticut, the Stoneledge Inn is the perfect place to relax, refresh and rejuvenate.

42 Hyde Road, Brooklyn, CT
stoneledgeinn.com
innkeeper@stoneledgeinn.com
(860) 412-0085

The Gwyn Careg Inn

a place to relax, celebrate and create memories
gwyncareginn.com.



**Available for overnight stays,
weddings, meeting space and special
events. Contact us at 860-942-0883 or
info@gwyncareginn.com.**

Places to stay



Gwyn Careg Inn

Auberge at Feather Hill, Pomfret

Seven spacious bedrooms with en-suite bathrooms accommodate up to 14 guests. Kitchen, living, and family rooms with fireplaces; indoor and outdoor event space. Lovely grounds and gardens. www.featherhillinn.com

Comfort Inn & Suites, Dayville

78 guest rooms, indoor pool, on-site restaurant and business center. www.comfortinn.com

Gwyn Careg Inn, Pomfret

Five guest rooms with private baths at an elegant Colonial Revival Mansion within 14 acres of greenery and beautiful gardens. www.gwyncareginn.com

Mansion at Bald Hill, Woodstock

New life for a historic landmark as a premier restaurant and an elegant bed and breakfast. Private and secluded. www.mansionatbaldhill.com

Motel 6, Putnam

All rooms have a TV, air conditioning and a private bathroom. Two-star hotel. Book online (<https://room77.com/>).

The Stoneledge Inn, Brooklyn

Built in 1870. The property, well known in the local community for its historical beauty, has been meticulously renovated to preserve its history while providing modern conveniences for its guests. The Inn features three spacious bedrooms, each with its own private bathroom. www.stoneledgeinn.com

The Inn at Woodstock Hill, Woodstock

Historic country inn, pastoral surroundings. Twenty-one comfortable, individually decorated guest rooms. Restaurant open only for private events and functions. www.woodstockhill.net

The Watson Boutique Bed & Breakfast, Thompson

Restored eighteenth-century home with four guest bedrooms and a two-bedroom suite. A getaway on beautiful, historic Thompson Hill. <http://thewatsonboutiquebb.com>

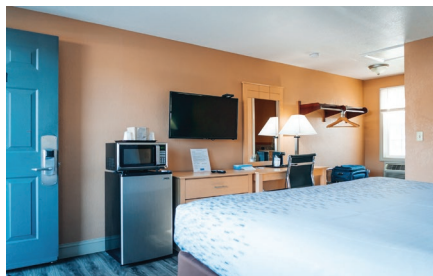
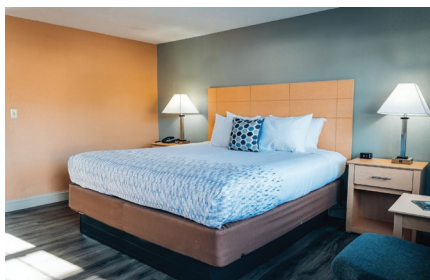
Quiet Corner Inn, Brooklyn

For business and leisure travelers. Free wireless high-speed Internet, microwave, mini-fridge. Book online. www.quietcornerinn.com





www.quietcornerinn.com



*Newly Renovated • Cable TV with HBO
100% Non Smoking Property • Micro / Fridge Available
Air Conditioned • Coffee Maker • Hairdryers In All Rooms
Free Highspeed Internet*

Exit 37-W Off 395 • Rt. 6
Minutes From Foxwoods Casino & Mohegan Sun

860•774•9644

479 Providence Rd. (Rt. 6) Brooklyn, CT



Events

Photo by Cynthia Saari, Woodstock Fair

Not-to-be-missed are popular seasonal events in northeastern Connecticut on the annual calendar. Visiting websites or calling to confirm details is highly recommended before you travel. Visit Discover Putnam's website, www.discoverputnam.com/events, for the most current list of events in Putnam. Find events in Killingly at www.killinglyba.org/community and www.facebook.com/Killinglyrecreation/. Another robust local events calendar is regularly updated by The Last Green Valley at <https://thelastgreenvalley.org/tlgv-events/>

FALL

Brooklyn Fair, the weekend before Labor Day, Brooklyn Fairgrounds. First held in 1809 and now the nation's oldest continuously active agricultural fair. Animals, exhibits, food, games, vendors, live music, other entertainment. www.brooklynfair.org

Corn Maze at Fort Hill Farms

Daily from September 1 to late October (weather permitting). Daytime, and flashlight nights for extra thrills. A new theme each year (2024: Thompson Speedway's 85th anniversary). Nature walks, PYO pumpkins, special events <https://forthillfarms.com/>

Woodstock Fair, Labor Day Weekend

The state's second oldest agricultural fair featuring crafts, livestock shows, petting zoo, Midway, contests, concessions, live concerts, and lots more. www.woodstockfair.com

Walktober, late September through early November, throughout The Last Green Valley National Heritage Corridor. Hundreds of FREE guided walks, paddles, hikes, bike rides, historical tours, and more ways to explore the region. Searchable online guide at www.thelastgreenvalley.org.

The Great Tomato Festival, September, Killingly:

Quirky town festival at Davis Park celebrating the garden tomato. Farmer's market, craft vendors, parade, and a food court. Free and open to all.

Thompson Community Day,

last Saturday in September, Riverside Park, N.Grosvenordale Vendors, food, music, kids' programs, classic car show. <https://www.thompsonct.org/recreation>

Celebrating Agriculture, Brooklyn Fairgrounds, 15 Fairgrounds Road,

Saturday, September 21. Showcasing local agriculture and the challenges facing farms today. Displays, family events, tractor pulls, food and entertainment. <https://www.facebook.com/CelebratingAg/>

Roseland Cottage Arts & Craft Show,

October, the weekend following Columbus Day. Woodstock. A leading New England juried fine arts and crafts show with 175 artisans, plus food and entertainment. www.facebook.com/Roseland-CottageFineArtsAndCraftsFestival. www.facebook.com/RoselandCottageFineArtsAndCraftsFestival



Putnam Car Cruise - Photo by WINY



Zombie Fashion Show, October 4, 2024, Putnam
Apocalypse-themed fashion show features mini-monsters, creepy couples, fiendish families and more.
<https://www.discoverputnam.com/events>

Great Pumpkin Festival, mid-October, Downtown Putnam: A community celebration of Fall featuring The Great Pumpkin, craft and art vendors, live music, activities for the kids, and more! <https://www.discoverputnam.com/events>

Tackle The Trail,
3rd Saturday in

October, Airline State Park; Challenging, fun, well-supported trail race through Airline State Park, includes marathon, ½ marathon and relay team options. Proceeds benefit students and programs at Quinebaug Valley Community College. Register by October 1.
<https://tacklethetrail.org/>

WINTER

It's Holiday Fair Season! consider the **Holiday Nature Store** (mid-November through Christmas) at CT Audubon Society's Center on Day Road in Pomfret or the long-running **Saint Nicholas Victorian Fair** at Christ Church in Pomfret (1st Saturday in December). Plus, the **Holiday Store** (open weekends after Thanksgiving) at the Thompson Historical Society.

Artists' Open Studios of NECT, Thanksgiving and the weekends following - a free, self-guided adventure. Visit more than 80 northeastern Connecticut artists and artisans in their own studios.
www.aosct.org

Holiday fun for kids sponsored by Town Parks & Rec. during December includes **"Santa Comes to Town"** in Putnam and **"Frosty's Big Night Out"** and **"Breakfast with Santa"** in Killingly.

Holiday Dazzle Light Parade, Sunday after Thanksgiving, Putnam: Floats, music and lights herald Santa's arrival in Putnam.

Live holiday-themed plays at the **Bradley Playhouse** Putnam (<https://www.thebradleyplayhouse.org/>) and **Little Theatre on Broad Street** (Danielson; Find them on Facebook). Weekends in December.

Fire & Ice, Putnam, February, Downtown Putnam
A great way to celebrate mid-winter and Valentine's Day with indoor & outdoor fun, including an ice block carving contest, "fire-themed" & other entertainment.
<https://www.discoverputnam.com/events>

SPRING

Spring Outdoors, from late March through June.
A mostly free series of outdoor activities such as guided walks, hikes, bike rides, paddles, educational fun, and more. <https://thelastgreenvalley.org/tlgv-events/>

Pomfret's Town-Wide Tag Sale kicks off the region's "Tag Sale Season." **First Saturday in May**, with 50-60 locations. Profits from map sales and registrations benefit community groups and their causes. <https://www.visit-pomfret.com>



Rotary Park Concerts

SUMMER

4th of July Fireworks:
Dates and times for these great local light shows sponsored by Town Parks & Recreation Departments vary each year.

Concerts and River Fire, Rotary Park, Putnam
For music schedule, go to <https://www.discoverputnam.com/events>

Summer Concerts, in Davis Park, Danielson:
Free. Thursdays 6-8 pm, July through mid-August.
(Killingly Rec on Facebook)

Second Saturdays, Killingly: in Davis Park during June, July & August free, family-friendly festival with games, prizes, local food & artisan vendors, and live music. (Killingly Rec on Facebook)

Particle Accelerator Concert: Date varies, Rotary Park in Putnam. Showcase of local music to raise awareness of mental health issues, a fundraiser benefiting United Services. <https://www.particle.rocks/>

Main Street Car Cruise, Putnam held in August, Gleaming, restored antique cars and iconic vehicles from TV and the movies to see up-close. Contests, food, entertainment. <https://www.discoverputnam.com/events>

The Great Outdoors



The Great Outdoors

Hiking, biking, birding, boating, golf and more!

Mashamoquet Brook State Park, Pomfret (RT 44)

General Israel Putnam's famous Wolf Den, Table Rock, and Indian Chair, well-marked trail system for hikes. Fishing, swimming, picnics.

CT Audubon Center at Pomfret Visitor Center and Bafflin Sanctuary, Pomfret Visitor Center at 218 Day Road. Bird walks, miles of trails, summer camps and school programs, year-round nature programs, lectures, and workshops.

Goodwin State Forest, Hampton

A CT State Forest with well-maintained and marked hiking, biking & horse trails plus year-round nature programs of all kinds for adults and kids.

Natchaug State Forest, Eastford Horse trails, fishing, and riverfront picnic sites.

The Airline State Park Trail

Parking lots at intervals along this former railroad bed extending from East Hampton to Thompson that is mostly complete. Explore the flat, gravel trail on foot,

bike, horseback, or cross-country skis in winter.
<https://ctparks.com/parks/air-line-state-park-trail>

Old Furnace State Park,

Killingly South Frontage Rd. (off Rte. 6)

Site of Revolutionary War foundry with blue-blazed trails leading to scenic overlook. Connects to Ross Pond State Park for fishing & hiking.



Pomfret Forest,

150 acres owned by the Town of Pomfret with a new multi-use trail system for hiking, mountain biking, and horseback riding connecting with the Air Line Trail, Pomfret Recreation Park, Wyndham Land Trust, and New England Forestry Association land. <https://thelastgreenvalley.org/member-directory/pomfret-forest/>

Putnam Cyclery, 58 Pomfret Street

Cargill Mill, lower level, Putnam
Featuring a large showroom for sales

and a full-service shop to keep your bike in shape.
www.downtownputnamcyclery.com

Quaddick Lake, Thompson

Swimming, fishing, and boating. Forest trail system nearby for hiking/off road biking. <https://portal.ct.gov/-/media/deep/stateparks/maps/quaddicktrailmap.pdf>.pdf

Quinebaug River Water Trail More than twenty miles of waterways to explore by canoe or kayak. For a paddler's guide with safety recommendations, put-ins and routes from Putnam, Thompson, Pomfret and Killingly: www.thelastgreenvalley.org

West Thompson Lake, North Grosvenordale

The Quinebaug River dam flood control project maintained by the Army Corps of Engineers provides boating, fishing, hiking, mountain biking, and a seasonal campground. Search for "West Thompson Lake" for details.

Roseland Park, Woodstock

A historic park on a 400-acre preserve. Roseland Lake, sports fields, a public golf course, amphitheater, group campground, fishing dock, and playgrounds.

<http://www.roselandpark.org/>

Owen Bell Park, Dayville

Track and trails for running and walking, playground equipment, sports fields, a skateboard park, and basketball courts. Picnic area and Ra-Ra's Snack Bar. This is a

town park open from dawn to dusk, a service of Killingly Parks and Recreation.

The Wyndham Land Trust, protects more than 5,000 acres of land and valuable habitat around the Quiet Corner. Most preserves are open to the public and many have walking trails. <https://www.wyndhamlandtrust.org/>



Thompson Speedway Motorsports Park, Thompson

Track schedule and private driving club. Watch or race on the 5/8 mi. high-banked paved oval track with 13,000 seats, and a 1.7 mi. road racing course. <https://www.thompson-speedway.com/>

Golf Courses open to the

public: CT National Golf Club in Putnam, Harrisville Golf Course and Woodstock Golf Course in Woodstock, Raceway Golf Club at the Thompson Speedway & Vineyard Valley Golf Course in Pomfret.

For state park information and locations visit:

<https://portal.ct.gov/DEEP/State-Parks/>

The Best Investments in life are:

1. Yourself
2. Real Estate



Your Dream Home, Our Priority



260 Route 171, Woodstock CT

860-315-9070

www.CRPremier.com

Meet Area Farmers



Woodstock Orchards

Orchards, farm stands, and “pick-your-own” farms open seasonally. Many make their own honey, maple syrup, jams and jellies.

Allen Hill Farm, Brooklyn

A seasonal Christmas tree farm on 350 acres with thousands of trees of all varieties and sizes. Enjoy wagon rides, free tree baling, a craft barn with locally made goods and maple products plus complimentary snacks. Seasonal wedding venue. www.allenhillfarm.com

Creamery Brook Bison Farm, Brooklyn

Group tours on a wagon ride among a herd of buffalo. Call to book a private tour or see their website for public tours in October. www.creamery-brookbison.net

We-Lik-It Ice Cream Stand, Pomfret Center

Ice cream, maple products, beef and pork, farm market. <https://we-li-kit.com/>

Fairvue Farms, Woodstock

A working dairy farm with 700 Holsteins. One of six Farmer's Cow® dairies. www.fairvuefarms.com

Buell's Orchard, Eastford

Pick-your-own strawberries, blueberries, peaches, apples, and pumpkins. Farmstand with vegetables, pies, cheeses. www.buellsortchard.com

Lapsley Orchard, Pomfret

Farm market, pick-your-own fruits, wagon rides. www.lapsleyorchard.com

Woodstock Orchards, Woodstock

Apples and cider, PYO blueberries and apples, vegetables, mums. Retail store (seasonal) and year-round bakery barn with cider donuts. **Find them on Facebook**

Farmer's Market locations in Putnam, Danielson, Brooklyn & Plainfield. Meet the growers and makers selling their own produce, plants and flowers, beef, poultry, cheese, honey, jams and jellies, maple syrup and baked goods. www.nectfarmersmarket.org and find them on Facebook

Unbound Glory Homestead, Pomfret

Heirloom vegetables available at the farm to CSA-Farmshare members and at Putnam Farmers Market. Farmstead wood-fired pizza on select dates. www.unboundgloryfarm.com

Farm to Table Market, Woodstock

Gaze at Elm Farm's dairy cows while eating ice cream; take home local dairy, meat, produce and other goods. Online ordering. www.elmfarm.net

At Woodstock Creamery, Woodstock,

Farm dairy producing milk (plain and flavored), skyr and labneh. Store with local meats and artisan products. <https://woodstockcreamery.com>

HANDCRAFTED LOCALLY OWNED



COFFEE, BREAKFAST, LUNCH, DESSERTS & MORE

Full Liquor License - Serving Your
Favorite Cocktails

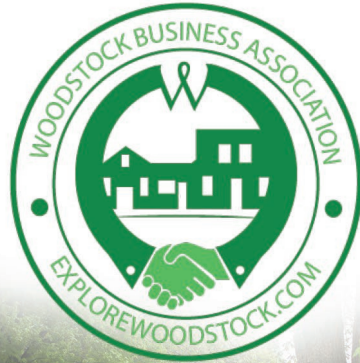
Live music every Friday and
Saturday nights 7:30pm-10:30pm



91 Main Street, Putnam, CT 06260 • 860-315-9028
Hours: Mon. & Tues. 8am-5pm • Wed. & Thurs. 8am-8pm
Fri. & Sat. 8am-11pm • Sun. 8am-5pm

www.sawdustcoffeehouse.com

EXPLORE THE CHARM OF WOODSTOCK, CT



explorewoodstock.com

WOODSTOCK BUILDING ASSOCIATES, LLC

The Leader in Design-Build

WOODSTOCK, CT

3 Route 171

860-928-0897

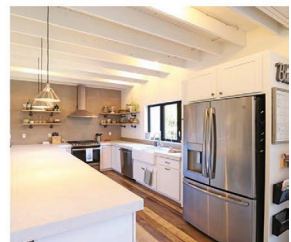
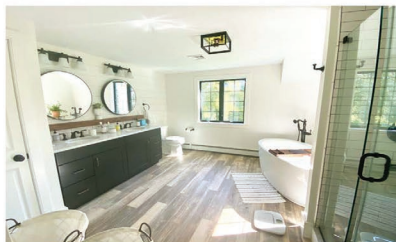


FRANKLIN, MA

15 Main Street, Suite 11A

508-570-4853

From design to completion, our architects, designers, estimators, project coordinators, superintendents, carpenters, and plumbers work as a team to ensure consistently superior craftsmanship for your project. Design and building costs are tailored to fit your needs without compromising quality. If you are looking for an experienced, organized, professional, and cost conscious design-build company, call Woodstock Building Associates today!



MA Home Improvement Contractor #119085 - MA Construction Supervisor #111269 - CT Home Improvement Contractor #565903 - CT New Home Construction Contractor #160

REMODEL - NEW CONSTRUCTION - KITCHENS & BATHS - ADDITIONS

www.visitnortheasternct.com



Advanced Back & Wellness Center

...healing from the core

We know how you feel~

- A "hot poker" between my shoulder blades
- I'm walking on a balled up sock under my toes
- My back "grabs me" when I go to stand up
- I can't straighten up when I get out of bed
- I'm ok until I do something
- There is pain "shooting" into my forearm

...and the five most dangerous words..." I thought it would go away".

Get out of pain, same day visits!



Dr. Debra A. Burns
CHIROPRACTIC PHYSICIAN

860.928.2292
21 South Main Street
Putnam, CT 06260
quietcornerchiro.com



*We are your local,
friendly, small town,
design, print, & copy center!*



*Let us show you the
ADVANTAGES of
SHOPPING locally!*

Chase Graphics

124 School St. • Putnam, CT 06260

860-928-3973

www.chasegraphics.net

America's First



Network Credit Union
Northeastern CT Healthcare Division

**Proudly serving healthcare employees and their families
in Northeastern Connecticut since 1965.**

Phone: (860) 928-2347

putnam@afncu.com

320 Pomfret St. Putnam, CT 06260 *(Located inside of Day Kimball Hospital)*

**This Credit Union is federally insured by the
National Credit Union Administration.**



Check out our website! www.afncu.com



"Our Goal is to Provide you with the Best Possible Service in Combination with the Best Quality Ingredients on the Market!"

Bring the Taste of Pizzazz Home Tonight!



136 Main Street
Danileson, CT 06239
860.774.8500

Monday - Saturday 11am - 9pm • Sunday 12pm - 8pm



www.letseat.at/pizzapizzazz



Renee's Bistro & Catering SERVICE

860-412-9365

Full Service, Off-Site, Deliveries & Pickups, Catering Available for Any Event, Any Size, Anytime!

Let Renee's Bistro & Catering Service Do All the Work for You.



Corporate Catering & Catering of all types are our specialty.

*Stop in to our Bistro for Lunch or Dinner -
Grab & Go, Dine In or Take Out*



142 School Street, Putnam, CT

Tel: 860-412-9365 • Support@ReneesBistroAndCatering.com
www.reneesbistroandcatering.com



"You'll Love Your New Home."

CR Premier PROPERTIES

860.455.5363

crpremier.com



Licensed in CT & MA



Vivian Kozey
Realtor

260 Route 171
Woodstock, CT 06281

vivian@crpremier.com

Private & Independent Schools



Pomfret School

Marianapolis Preparatory School, Thompson

Discover your excellence at Marianapolis, an independent, Catholic, day and boarding school located in Thompson, CT. Here, students in grades 9-12 and postgraduates live and learn alongside faculty members, embrace growth through a liberal arts curriculum rooted in experiential learning, make a social impact through community service, and graduate as confident, engaged citizens, ready to lead in an ever-changing world.



Marianapolis Preparatory School

Explore all that Marianapolis has to offer!

- LEAP Week, a project-based mini-term where students explore subject areas of interest, including traditional academics, the arts, community service, cultural immersion, and more at sites across the country.
- A rigorous curriculum including 28 AP course offerings and opportunities to explore nearly 100 different courses of study.
- The Centers of Excellence, where students engage through targeted course modules, projects, and

internships in four Centers: Innovation, Business & Entrepreneurship, Social Justice, and Health Science.

- Extensive co-curricular offerings, including more than 30 clubs and organizations, dozens of leadership opportunities, and 17 interscholastic athletic and extra-curricular programs.
- Weekend programming - activities ranging from goat yoga and river rafting to cranberry bogging and glass blowing.

A 100% college acceptance rate. Throughout the college process, students are supported and guided by our College Placement team, as they consider their futures beyond Marianapolis and embark on their next steps - prepared for college and for life.

At Marianapolis, every student makes an impact and every student discovers what inspires them to become eager and enthusiastic lifelong learners. Reach out to learn more! www.marianapolis.org

Pomfret School, Pomfret

Founded in 1894, Pomfret School is an independent boarding and day school serving grades 9-12, plus postgrads. Set on a stunning 500-acre hilltop in Northeastern Connecticut, our students come from around the country and the world to find purpose and meaning in their lives through a transformational educational experience. In 2024, Pomfret was ranked one of the best private high schools in America. To see how we're inspiring the next generation of change makers and problem solvers, inquire today.

www.pomfret.org



P R E P MARIANAPOLIS



*A vibrant and innovative independent
Catholic day and boarding school in Thompson, CT*

admission@marianapolis.org
www.marianapolis.org





Rectory School

Rectory School, Pomfret

Rectory School is an independent, co-ed junior boarding (Grades 5-9) and day (Early Childhood-Grade 9) school. With support, guidance, attention, and belief from the adults who surround them, Rectory students do the

only matched by its dedication to innovative education. Its diverse and challenging course offerings, state-of-the-art STEM and Arts facilities, and celebrated athletics programs help to foster an environment of growth and discovery for the next generation of global citizens. Learn more at www.woodstockacademy.org

Quinebaug Middle College, Danielson

Located on the peaceful campus of Quinebaug Valley Community College (QVCC) in Danielson, QMC offers high school students a middle college experience that enables them to earn a high school diploma while taking college courses, transferable college credits from QVCC. Our scholars select from one of our six learning



The Woodstock Academy

hard to work to not only understand themselves but also to be a part of an active and diverse community. Our students are surrounded by adults who create a compelling environment that offers challenge and support. Together we are committed to a simple idea: each of us has something to learn, and something to offer. At Rectory, we build a foundation of core academic skills, create powerful learning experiences both inside and outside the classroom, and foster strong ethical and social values. The result is students who understand themselves and the world around them. Rectory students can speak frankly about their strengths and where they need to improve. Rectory students aren't just ready for their next school; they are ready for life.

www.rectoryschool.org

The Woodstock Academy, Woodstock

Established in 1801, The Woodstock Academy is one of the oldest independent high schools in the nation and has grown to serve co-ed day and boarding students from all over the world. WA's reverence for tradition is



Quinebaug Middle College

pathways: Liberal Arts and Humanities, Education, Business Leadership, Engineering, Manufacturing, and Allied Health Sciences. Core academic and elective courses and mentorship opportunities are aligned to the individual learning pathways. In addition, our scholars gain real-world experience in project management, public communications, and community organization and leadership. Enrollment is not limited to students in northeastern Connecticut. www.eastconn.org/qmc



EASTCONN'S Art at the Capitol Theater

Connecticut State Community College Quinebaug Valley (formally QVCC) Danielson

QVCC provides high-quality education, workforce training, excellent services and innovative partnerships that enhance the vitality of the community and improve the quality of life for residents of northeast Connecticut. The word "community" in the college's name reflects a strong commitment to understand and to meet the educational needs of area citizens, businesses, and industries. At QVCC you can earn an associate's degree, transfer to a four-year college or university, begin or advance your career, or enrich your life through lifelong learning. www.QVCC.edu

ACT - Arts at the Capitol Theater Performing Arts Magnet High School Willimantic

ACT is a full-day, comprehensive, public, performing arts magnet high school located in the Capitol Theater in downtown Willimantic. Curriculum and instruction are guided by a personalized, competency-based framework. Students engage in integrated arts projects, and instruction is personalized to address individual learning needs. Students study with certified academic teachers



Quinebaug Valley Community College

and professional artists in this small, arts-focused learning community. Each grade is limited to about 35 students, making this an intimate, focused, artistic learning environment for students in grades 9–12. Students who reside in the partner towns of Eastford, Killingly, Norwich, Plainfield, Stafford, Windham, and Woodstock have the benefit of a secured number of ACT seats. Students from other Connecticut towns are admitted through an application process. www.eastconn.org/act

Putnam Science Academy, Putnam

Putnam Science Academy is a private co-educational boarding and day school serving students from grades 8-12 and post graduates. PSA offers a comprehensive college preparatory program focusing on arts, science, mathematics, and technology. This small structured school delivers a solid educational program and enrolls students from more than 30 countries from around the world. With a 100% college placement rate, most of our student athletes move onto Division I or II schools with scholarships. Nestled in the quiet corner of Connecticut, Mustang students are able to be a part of a strong proud community that prides itself on teamwork and dedication. www.putnamscienceacademy.org



Putnam Science Academy

ATTORNEY MICHELE ANN PALULIS, LLC



**Friendly compassionate
legal services for you and
your loved ones.**



158 Main Street, Suite 2,
Putnam CT 06260
(860) 928-9928

michele@attorneypalulis.com

**GERARDI
INSURANCE**



PUTNAM • KILLINGLY
860.928.7771

*We have been getting our customers the right
coverage at the right price for over a century.
Become a customer and find out why.*



PERSONAL • BUSINESS • BENEFITS • MEDICARE



FRESH



450 DEERFIELD RD. POMFRET, CT
vanillabeancafe.com



UNIQUE



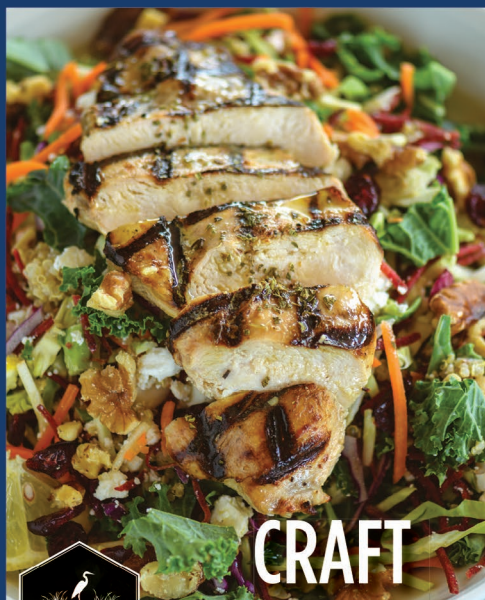
85 MAIN ST. PUTNAM, CT
85main.com



QUALITY



1 DOG LANE STORRS, CT
doglanecafe.com



CRAFT



135A STORRS RD. MANSFIELD, CT
fentonrivergrill.com



Creating Unique Dining Experiences in Northeastern Connecticut
greenvalleyhospitality.com



POMFRET

let your evolution begin

We are a private high school for boarding and day students located in Northeastern Connecticut. In 2023, Pomfret was ranked one of the top independent schools in the country.

Learn more at *[Pomfret.org](https://pomfret.org)*.

To arrange for a tour and interview, call our Admissions Office at 860.963.6120 or email admissions@pomfret.org. Financial aid available.